

END O' THE TRAIL

An Addition On

WOMAN LAKE - CASS COUNTY, MINNESOTA

Nature's Supreme Effort. Hunting and Fishing Unexcelled.

Reached by Auto from the Twin Cities via Jefferson and Scenic Highways, or by rail, on through trains without change of cars, via Northern Pacific and Minnesota and International Railways.

BIG WOODED LAKE LOTS \$95 TO \$350

Easy Terms. Liberal Cash Discount. No Interest or Taxes During Life of Contract. Cabins and Cottages Built at Minimum Cost.

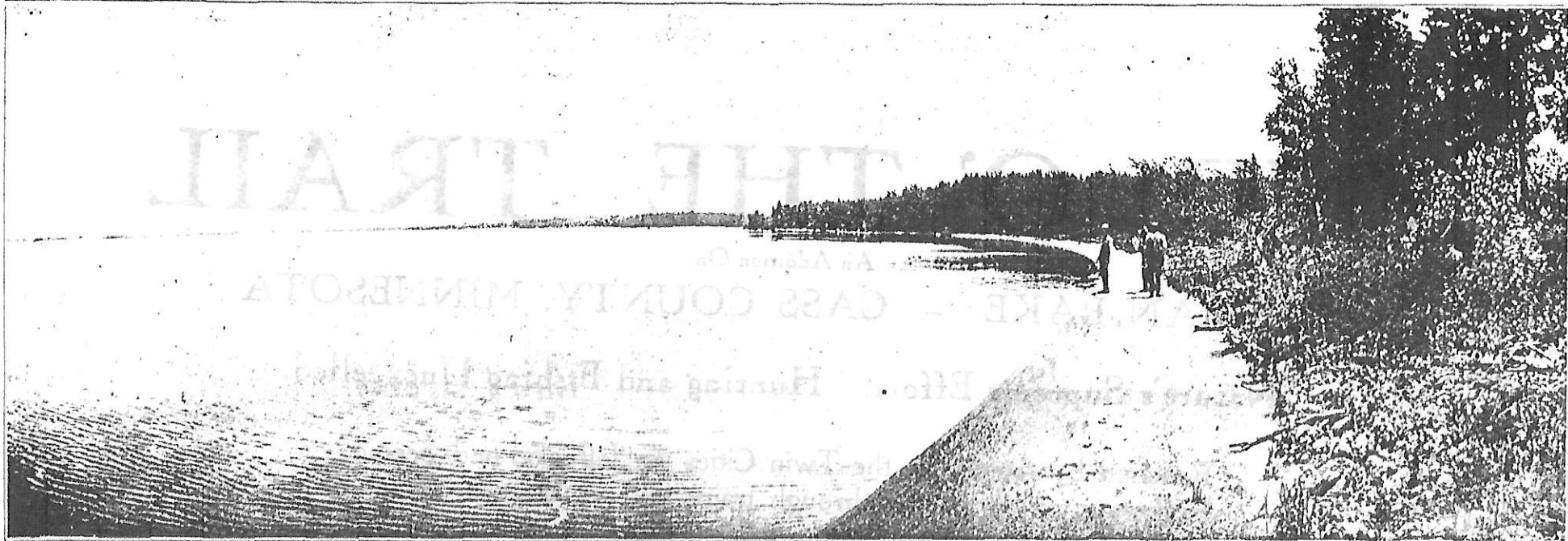
A WRITTEN GUARANTEE WITH EVERY LOT

FISK *and* FAIRBANKS

Phone N. W. Atlantic 3317-3318

425 PLYMOUTH BUILDING

MINNEAPOLIS, MINN.



Woman Lake has a fine, clean, sandy beach—no mud, no weeds.

FOREWORD



AMPING, fishing, hunting, canoeing, bathing: do they interest you? Quite naturally they do. All real Americans, with red blood in their veins, enjoy outdoor life. It is a heritage handed down from our forefathers. From the days when America was young and outdoor life was a matter of course. From the days when existence itself was largely dependent upon skill with the rod and rifle.

Who has not read with a thrill, the life of Daniel Boone and of Kit Carson, or of dozens of others of our early adventurers? Possibly we wouldn't care to undergo the hardships these early pioneers endured but a spice of this outdoor life appeals to most of us. We wouldn't care to live in a log cabin all the time, but for a vacation in the summer it has a great fascination.

In planning our summer vacation trip the question of where to go is of vital importance. Too many trips are spoiled by going to the wrong place. Poor fishing, poor roads, poor accommodations, and many other drawbacks tend to mar our pleasures.

It was after years of personal experience with lake resorts that were lacking in many of the features most to be desired that we resolved to find, if possible, a location with which no fault could be found. After months of search we attained our ambition. We reached the End O' the Trail.

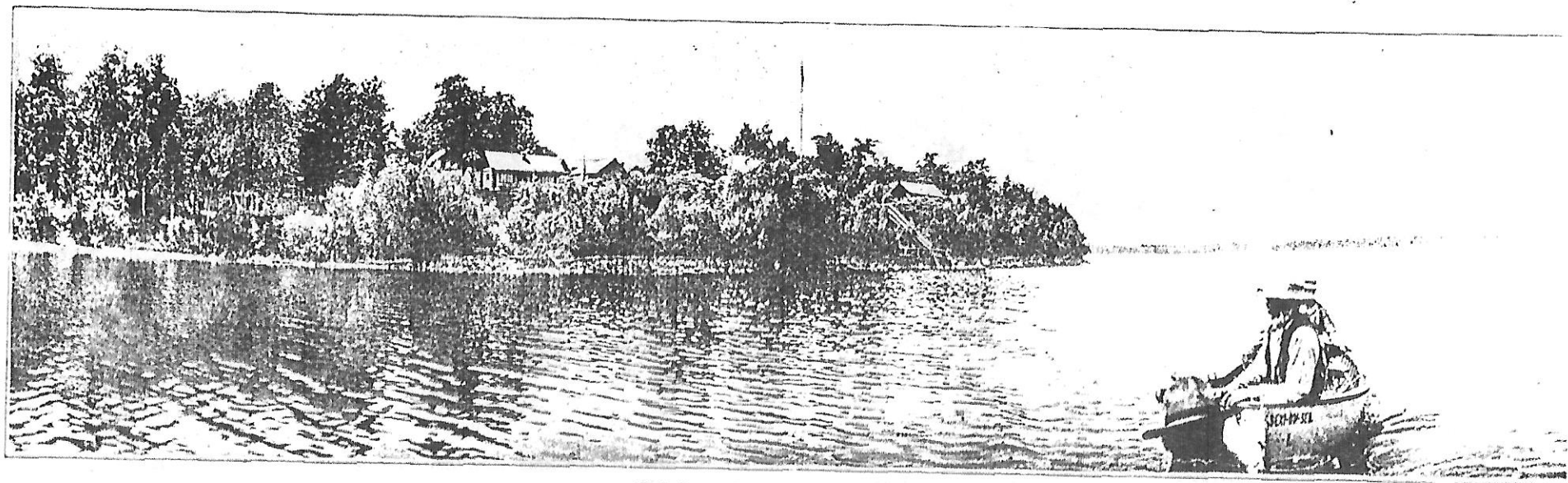
Up in Cass County, Minnesota, in the land of the big pines, in the center of the ten thousand lake district, on the shore of Woman Lake, we found what we sought.

This district is truly a hunters' and anglers' paradise. But one day's drive by auto from the Twin Cities, via the magnificent Jefferson and Scenic Highways, it is easily accessible and yet is distant enough from the centers of population, that nature is still found in her primitive condition, unsullied by the Sunday crowds that frequent the nearer resorts.

With a personal knowledge of most of the lakes of Minnesota, and after carefully inspecting and rejecting many other properties, we selected Woman Lake, with its magnificently wooded shores, its clean sandy beaches, its cool sparkling spring waters, teeming with big gamey fish, as the one ideal location.

We feel that in submitting End O' the Trail for your approval we are offering you the best there is.

FISK & FAIRBANKS.



Kabekona Camp, Woman Lake.

WHERE SHALL WE GO?

People in ever increasing numbers are beginning to realize that an outing every year is a necessity. After a few weeks spent in the Great Out Doors, we return to our work with increased vigor, and the memories of the vacation spent on the lakes and in the woods of Northern Minnesota are amongst our most cherished possessions. Not only the tired business man but the entire family look forward to and prepare for the trip many weeks ahead.

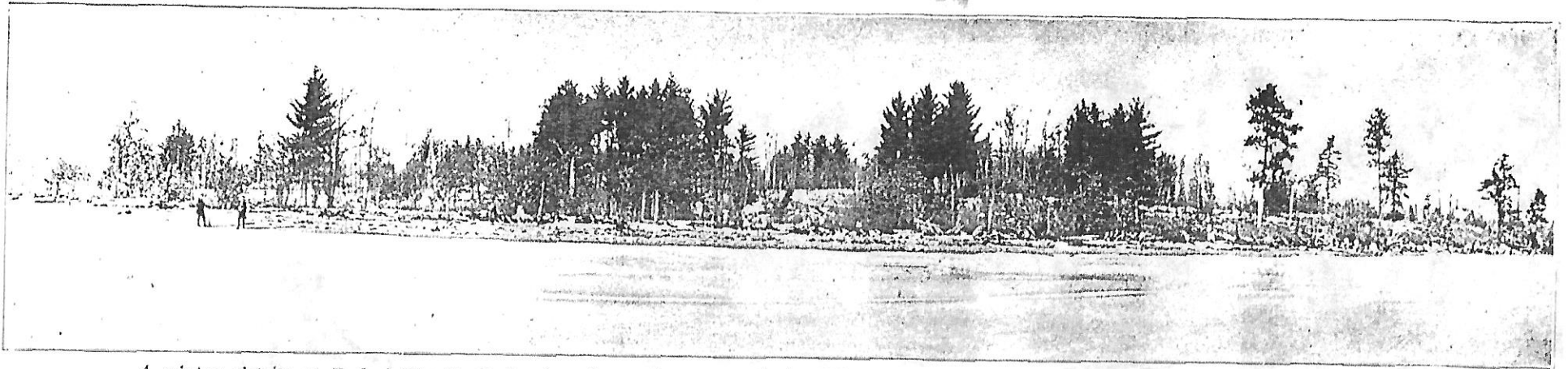
Where shall we go? That is the most important thing of all. If we drive our own car the question of good roads is paramount. Small pleasure in grinding through endless miles of mud. Next, where shall we find good fishing, not an occasional sun fish or crappie or a bass or two, but real fishing? Big fellows, the battling muscallonge, big and small mouth black bass, wall-eyed pike and countless others. And where the strikes come often.



Hundreds of miles of roads like this make Cass County a delight to the Tourist.



Water Lilies.



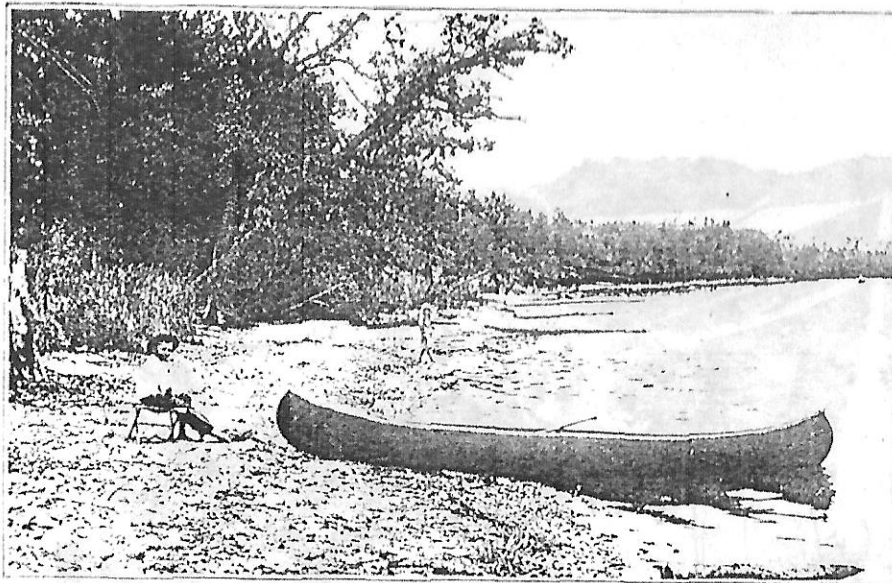
A winter picture at End o' The Trail showing shore. In summer it is difficult to secure a picture like this, the vegetation being so dense.

And boating and canoeing. And a fine bathing beach. We want the best. We would like mail delivery and telephone service. And we want ice for our cabins. And, oh yes, after the day is over we want a little social recreation. The young folks like to dance.

These problems and many others are solved at End O' the Trail. A combination of nature with the conveniences of modern life.

LOCATION

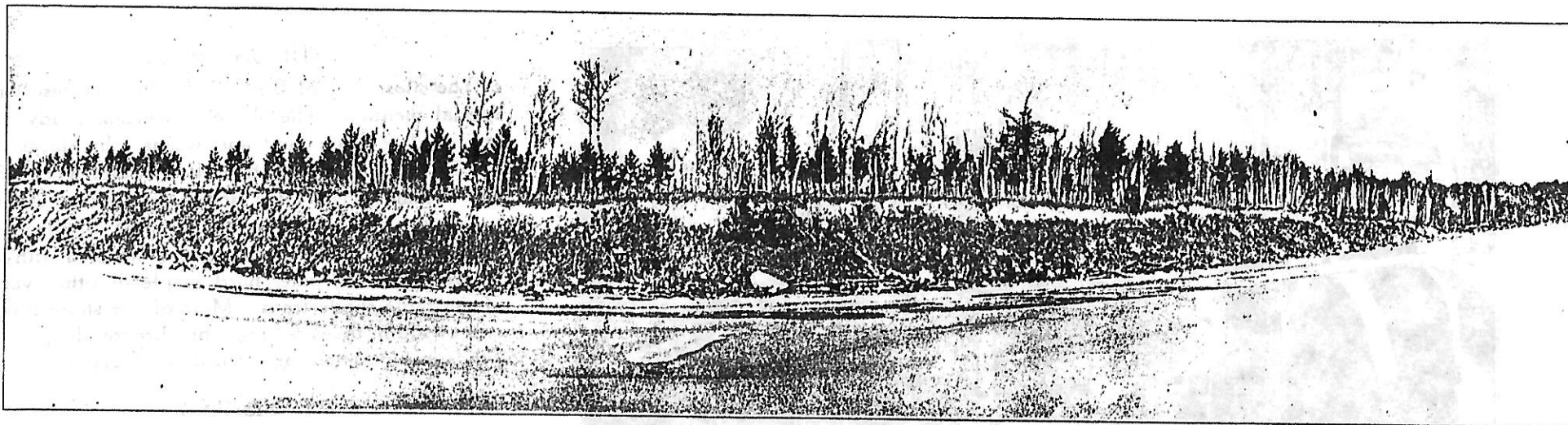
End O' the Trail is located in Cass County, Minnesota, on Woman Lake, a beautifully clear, sparkling body of spring water, with a shore line of approximately thirty miles. It is the largest and most famous of a group or family of famous lakes such as Baby, Kid, Man, Girl, Little Boy, and Child Lakes, all of which are connected by waterways, or thoroughfares as they are locally known, and through which boats or canoes may pass from one lake to another.



The children enjoy themselves every minute.



We have a bathing beach second to none.

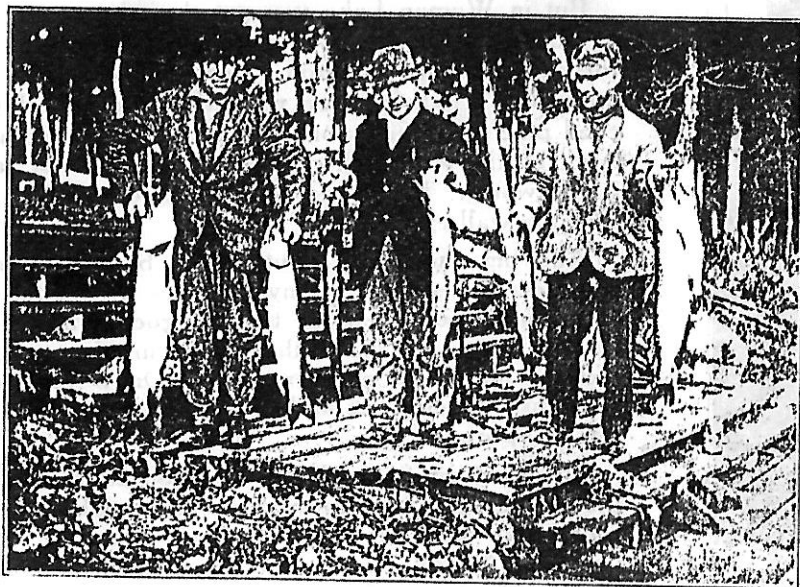


In places the banks rise ten to twenty feet above water level, affording a magnificent view across the lake.

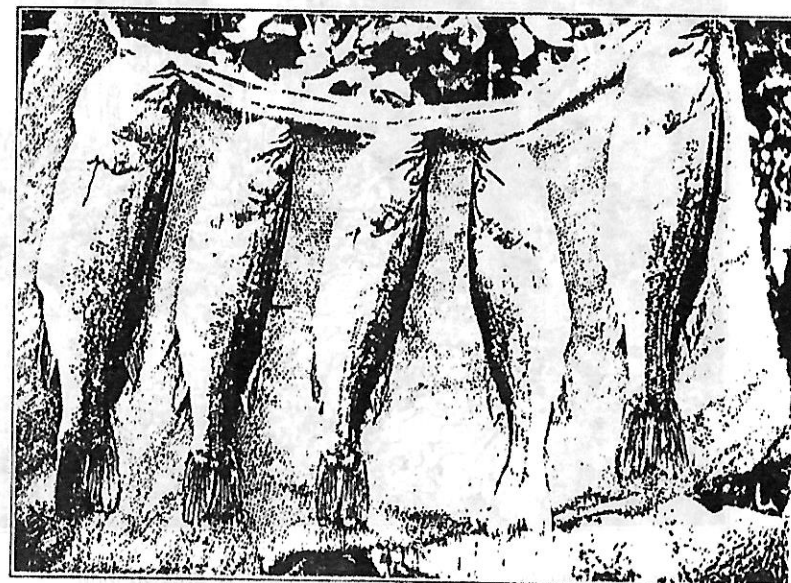
ACCESSIBILITY

Woman Lake is ten miles east of Hackensack and one hundred and ninety-four miles from the Twin Cities, via the Jefferson and Scenic Highways. These highways are too well known to need much mention. They are fine, hard roads and the tourist need have no fear of mud, no matter how hard it rains. The Jefferson Highway is paved with concrete as far as Elk River, thirty miles from Minneapolis and we predict that within the next few years, the entire trip to Woman Lake can be made on pavement. A new Federal road, costing \$8,000 per mile, is now under construction from Hackensack to Longville and passes directly through End O' the Trail.

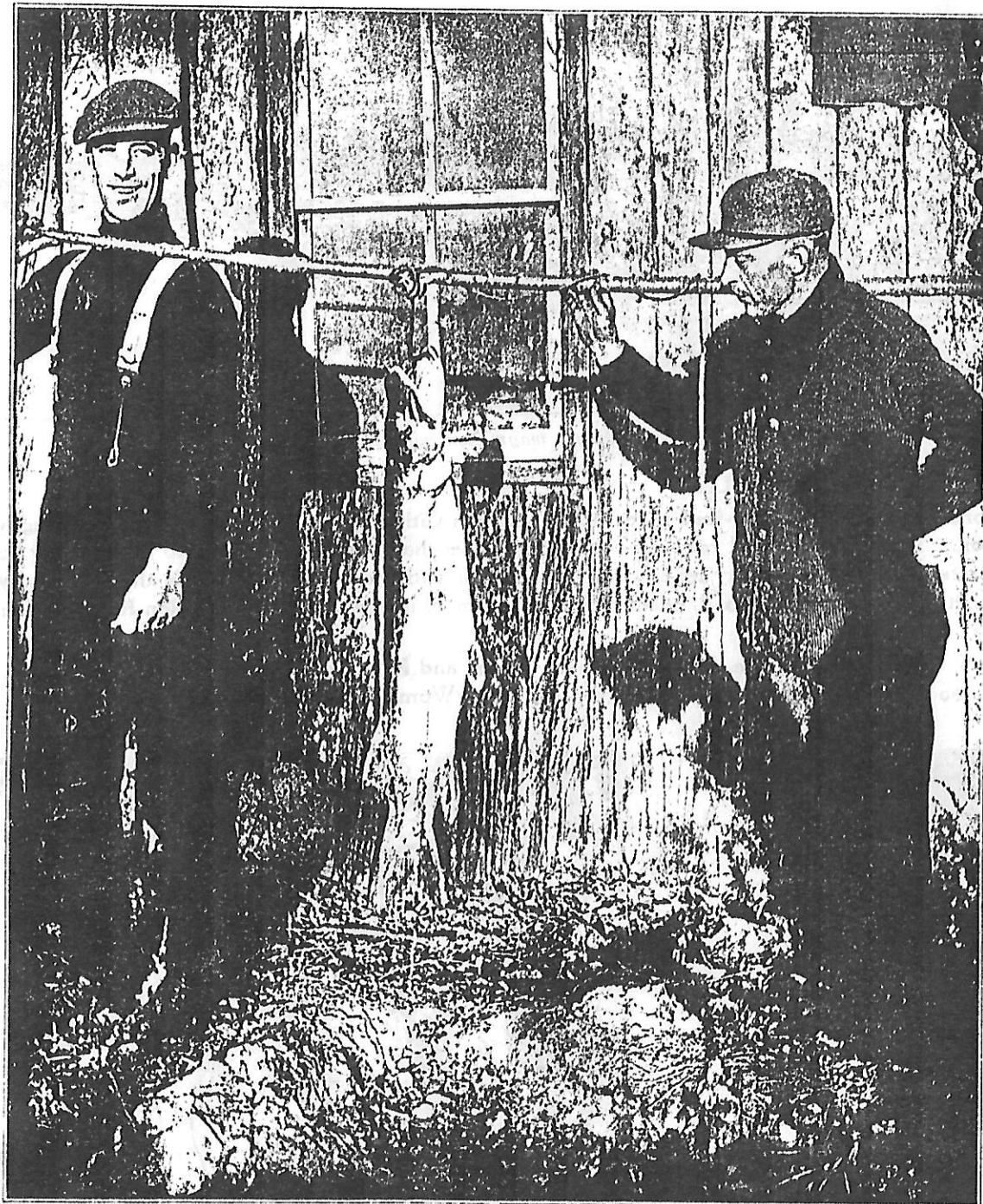
Those coming by rail have first class through trains, with Pullman service, via the Northern Pacific and Minnesota and International Railways, with auto bus service from Hackensack to End O' the Trail. So rain and mud have no terrors for visitors to Woman Lake.



A few big ones from Woman Lake.



Aren't they beauties? Small-mouth Black Bass.



How would you like to land one like this? A Muscallonge weighing 35 pounds. Length, 43 inches.

THE SHORE LINE

The shore line of End O' the Trail is deserving of special mention. The shore is a clean, sandy beach, entirely free from mud and weeds. In places banks rise from ten to twenty feet above water level, affording a magnificent view across the lake. At other points the shore rises gently, but at all places it is high and dry. All lots are heavily wooded with a fine growth of birch, pine, hard maple or other varieties of desirable shade trees. Most of the shore lots face east or south, thus assuring a fine breeze, the prevailing winds in summer being from these directions.

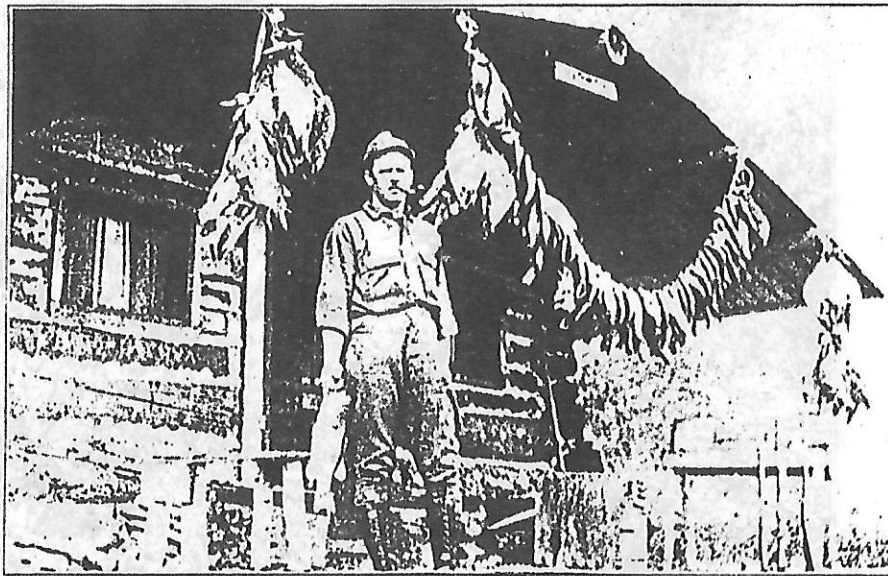
FISHING

Fishing did you say? Oh boy! Here's where you get the real sport. In the lakes closer to the cities the big ones are pretty well fished out. You have probably fished time and again in some of these closer lakes and wondered where the big fish, that you had heard about, were in hiding. They are not in hiding, they are gone. Gone to the Happy Hunting Grounds, or wherever a fish goes when he departs this life. The big ones are simply fished out, and the week end crowds from the cities don't let the little ones alone long enough for them to grow big.

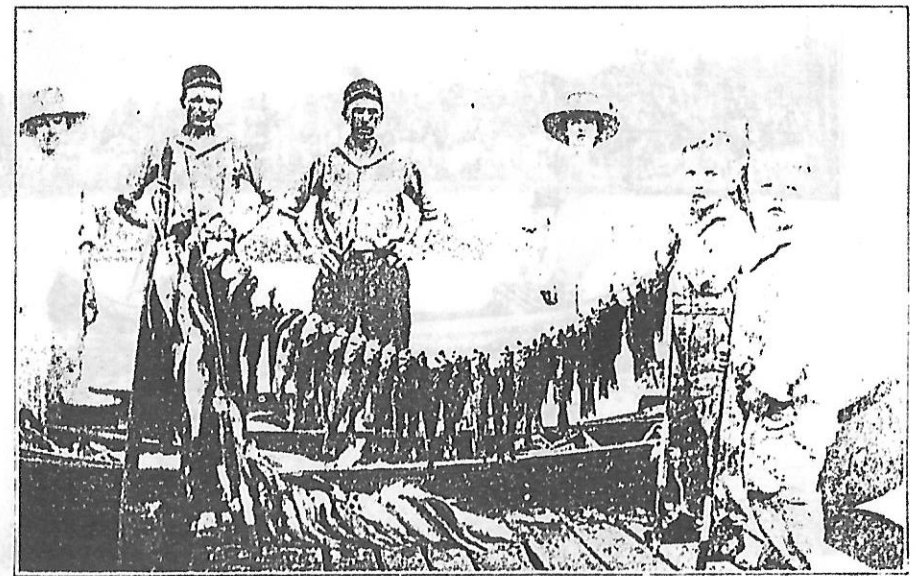
But in Woman Lake you get the whoppers. Big, fighting muscallonge, weighing up to thirty-five and forty pounds are common. Feels like your boat was hitched to a whale when you hook one. And wall-eyed pike fairly fight for a chance to grab your hook. And, by the way, wall-eyed pike are the finest eating in the world. Many people never cared for fish until they ate wall-eyed pike.

And big and small mouth black bass are here in countless thousands. Many disciples of Walton will travel hundreds of miles to find good small-mouth bass fishing. We have them here in plenty. And pickerel and great northern pike. Or, if you prefer small fish the crappies and rock bass will provide you lots of sport.

But we must stop. If we told you about some of the catches that have been made at this lake it would sound like some of "Old Timers" stories to Andy Gump at Shady Rest. But try it yourself and be convinced.



Truly a hunter's and angler's paradise.

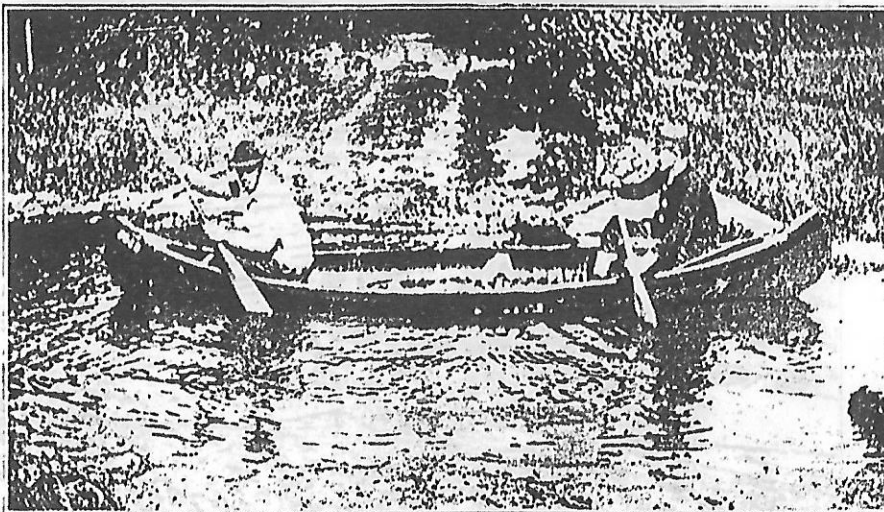


A morning's catch. And the kiddies caught their share.

And the supply of fish of all kinds is practically inexhaustible. For the reason that this lake is connected with a whole chain of lakes, and all of them are connected with big Leech Lake and the Mississippi River. The thoroughfares or streams connecting the lakes are the runways for fish, and in the spring, just as the ice is breaking up, it is an interesting sight to watch the myriads of fish passing by. They go through in countless thousands.

BOATING AND CANOEING

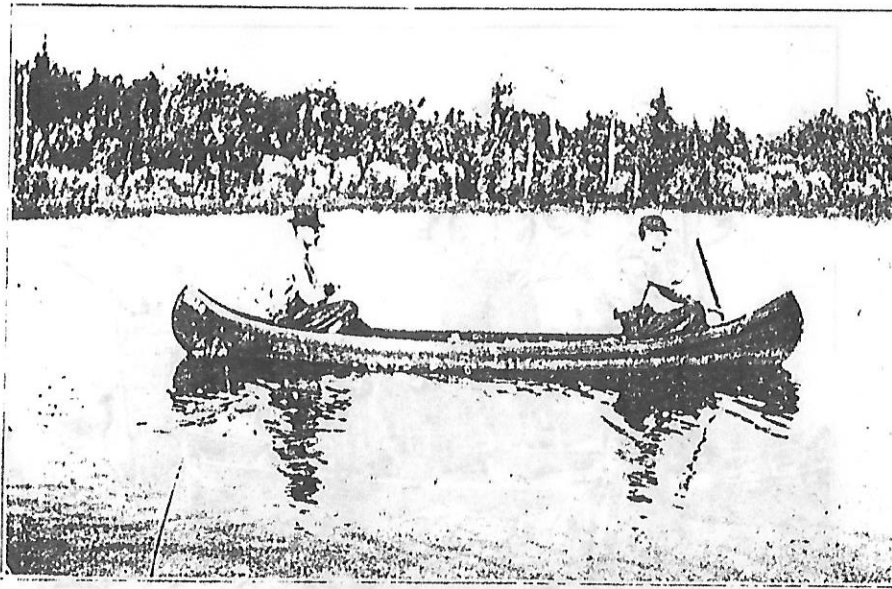
Among the many pleasures in store for the happy possessor of a lot in End O' the Trail are the boating and canoeing. Within a radius of a few miles there are over fifty lakes, all connected by waterways through which boats and canoes may pass from one lake to another. If you want a long



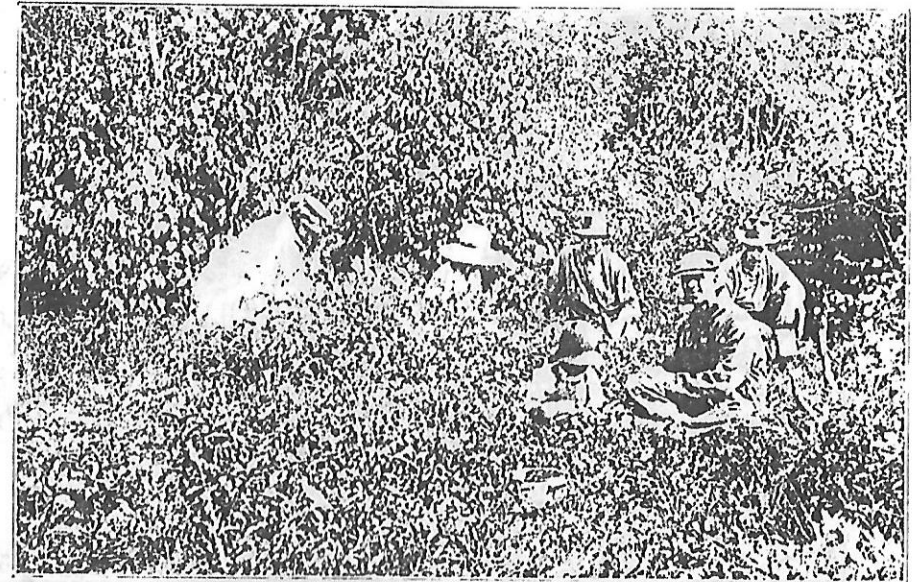
A thoroughfare between two lakes. You can canoe for hundreds of miles.



Come on in. The water's fine.



Off for a trip with "Uncle Tom."

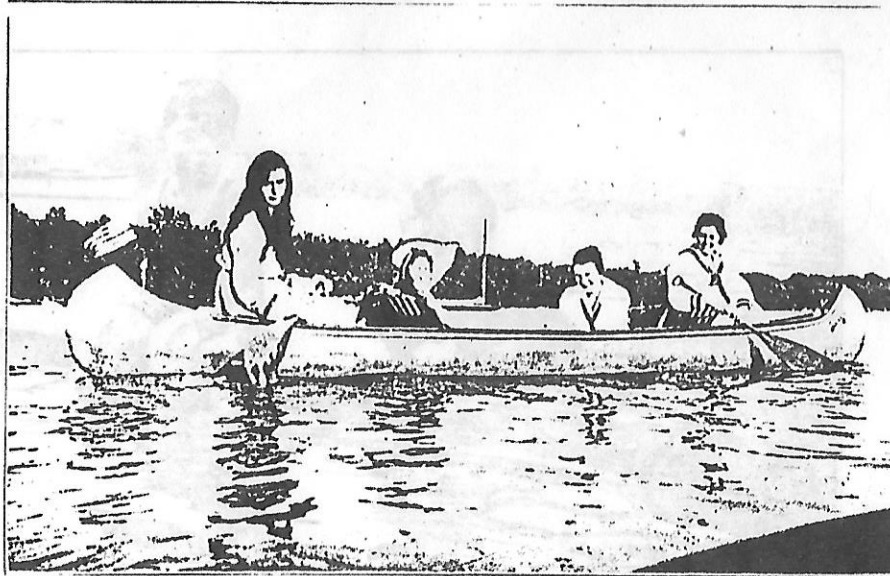


Picking Blueberries.

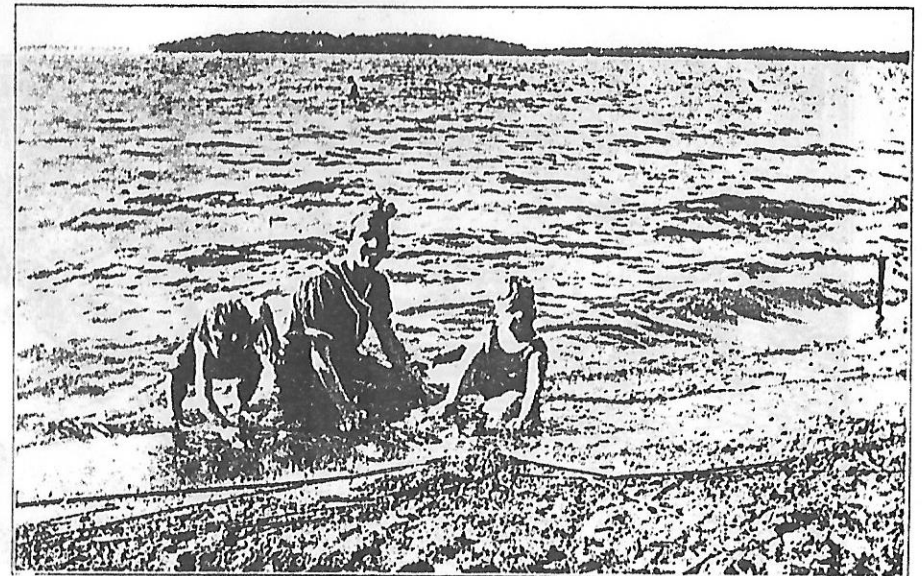
trip you can canoe up through Little Boy river to Leech Lake and on out into the Mississippi river and up to Itasca Park, the source of the mighty "Father of Waters." Or a less strenuous way is by boat with an Evinrude motor attached. You can travel by boat for hundreds of miles.

SAILING

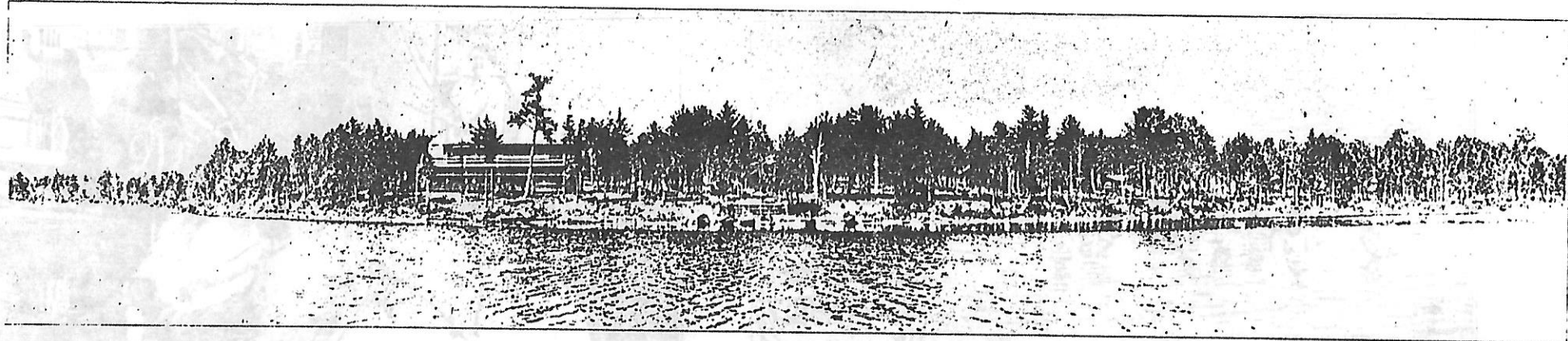
Or, if you enjoy sailing, there is nearly always a fine breeze on the lake, and this sport can be enjoyed at its best. What is more enchanting than a sail on these silvery waters on a moonlight night? The splash of a big bass, as he breaks the surface in quest of his prey, or if you sail close to shore,



Don't they look happy? Lock up the office and come on.



Do they enjoy it? We say they do.



At Seni-om-sed Lodge adjoining End o' The Trail. Dancing Pavilion in foreground.

the sight of a timid doe with her fawn, come down to quench their thirst in the cool, sparkling waters of the lake, form a picture that will remain with you always.

BATHING

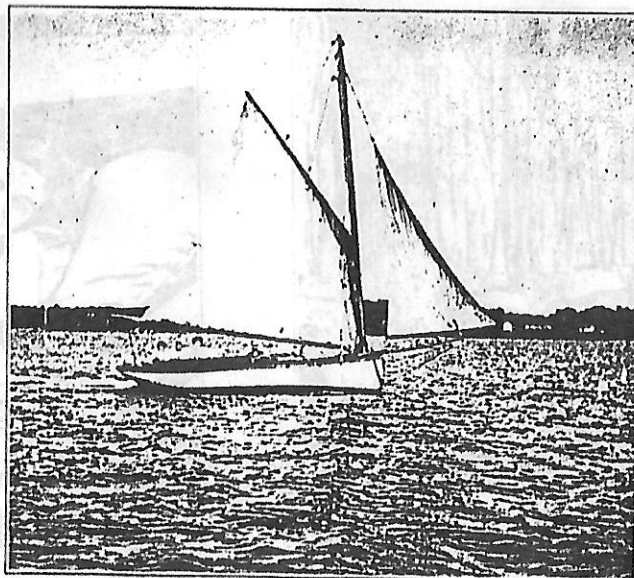
Practically the entire shore line of End O' the Trail is a sandy beach, entirely free from mud and weeds or growth of any kind. We have a long stretch of the finest bathing beach on the lake. Fine clean sand and shallow water. After a swim in this beautiful, clear water you will realize that Ponce de Leon made a great mistake when he sought the Fountain of Youth in Florida.

CLIMATE

The climate at End O' the Trail is also worthy of special mention. If you have ever driven to Northern Minnesota, you have probably noticed that after you got up into the land of the big pines that the air had a different feel and odor. It is hard to describe just what makes this difference—but it is there. The air has a cleaner, fresher smell, tinged with the spicy odor of the pines and the balsams, entirely different from the air we breathe in the cities.



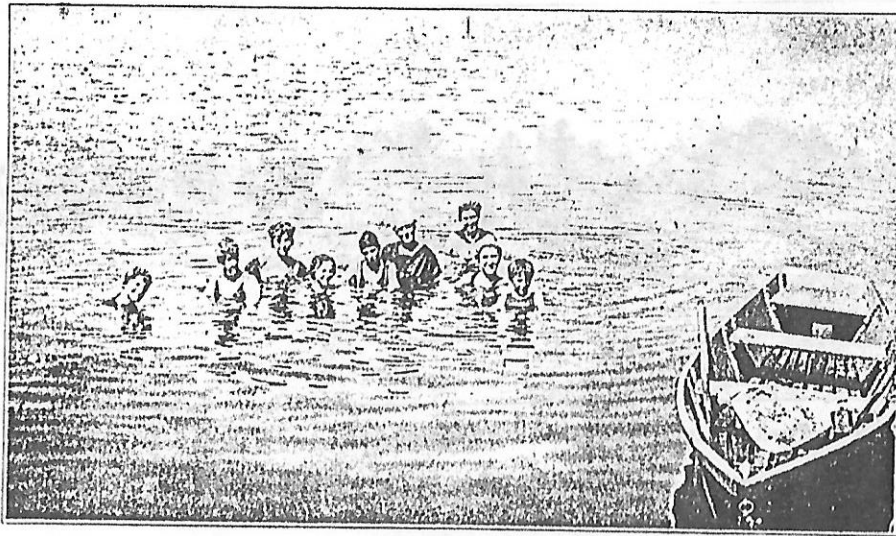
On an exploration trip.



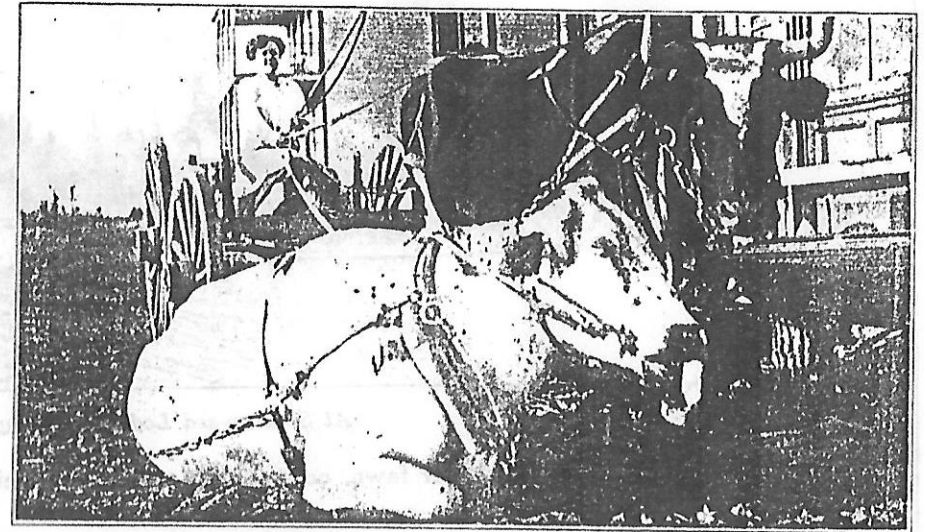
Sailing may be enjoyed at its best.



Wonder if he caught it himself?



In the good old summer time.



Out of gas. At Hackensack.

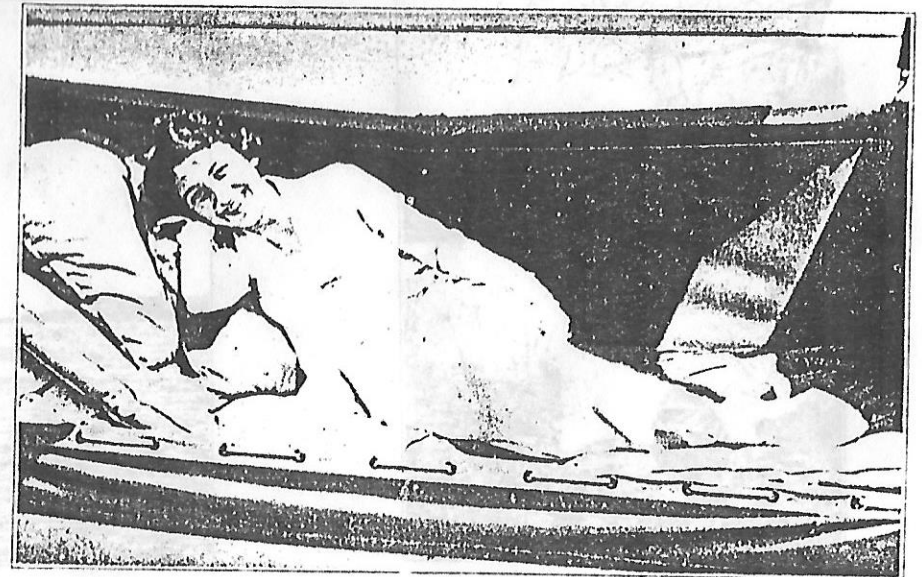
HAY FEVER

If you are ever troubled with hay fever you will be particularly interested in this location. This affliction, as you probably know, is caused by the pollen from various species of weeds. These weeds are almost invariably found on cultivated land but are rarely found in the more northerly unsettled portion of the state.

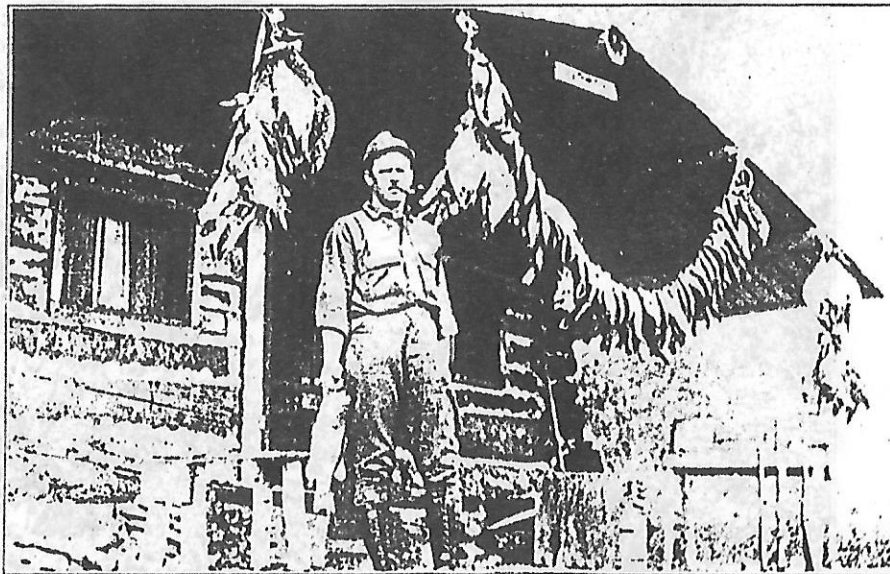
At Woman Lake sufferers from hay fever secure almost immediate relief. Except in very rare cases, within a few days all traces of the trouble are gone.



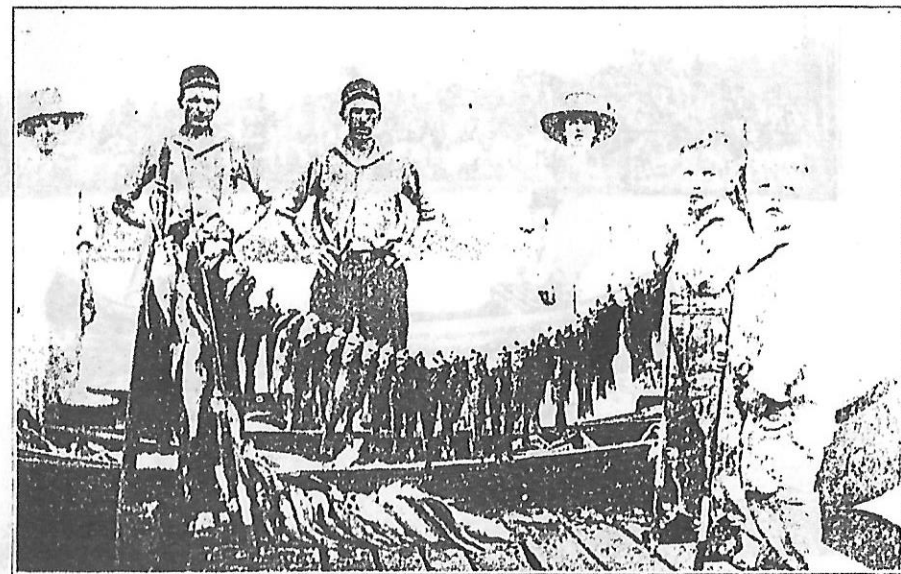
There may be a future president in this group:



After a hard (?) day's work.



Truly a hunter's and angler's paradise.

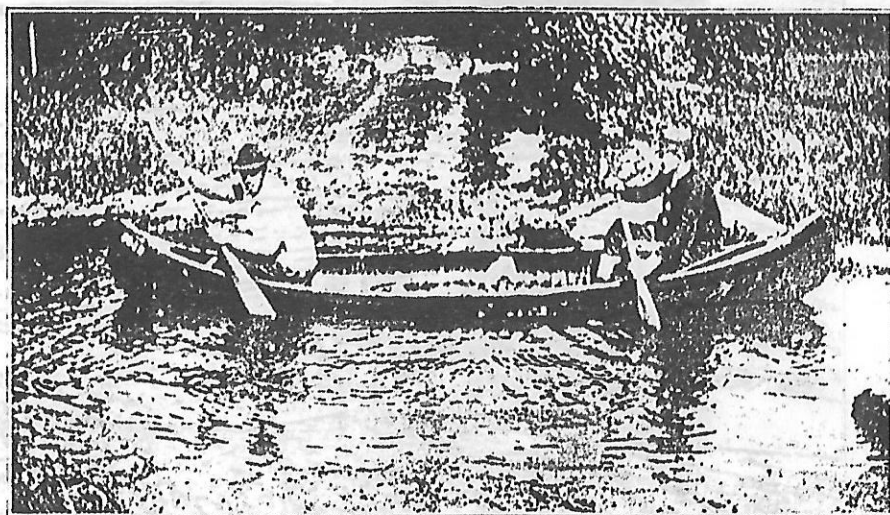


A morning's catch. And the kiddies caught their share.

And the supply of fish of all kinds is practically inexhaustible. For the reason that this lake is connected with a whole chain of lakes, and all of them are connected with big Leech Lake and the Mississippi River. The thoroughfares or streams connecting the lakes are the runways for fish, and in the spring, just as the ice is breaking up, it is an interesting sight to watch the myriads of fish passing by. They go through in countless thousands.

BOATING AND CANOEING

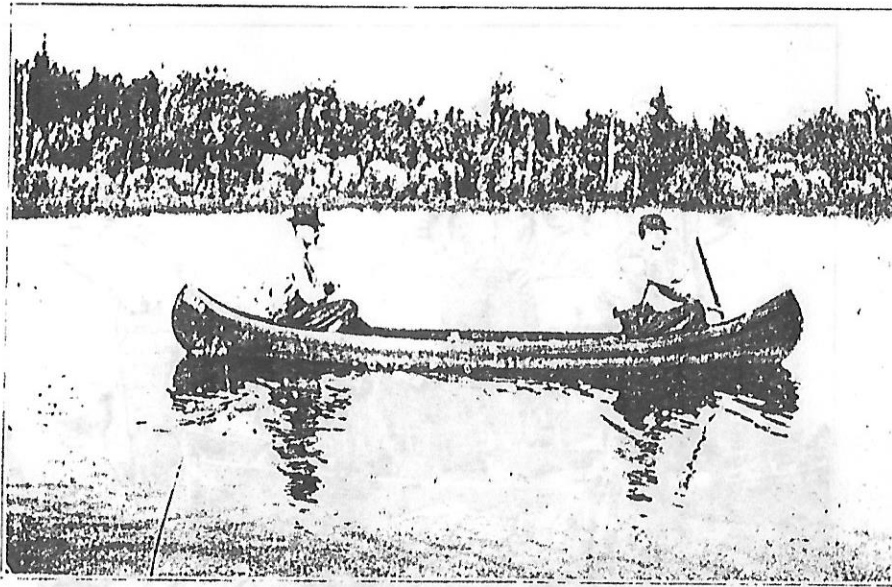
Among the many pleasures in store for the happy possessor of a lot in End O' the Trail are the boating and canoeing. Within a radius of a few miles there are over fifty lakes, all connected by waterways through which boats and canoes may pass from one lake to another. If you want a long



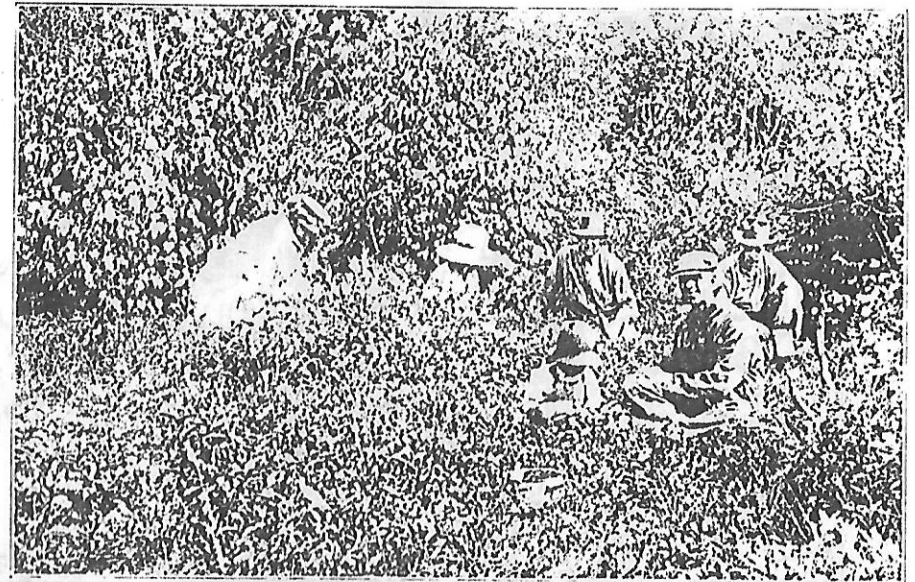
A thoroughfare between two lakes. You can canoe for hundreds of miles.



Come on in. The water's fine.



Off for a trip with "Uncle Tom."

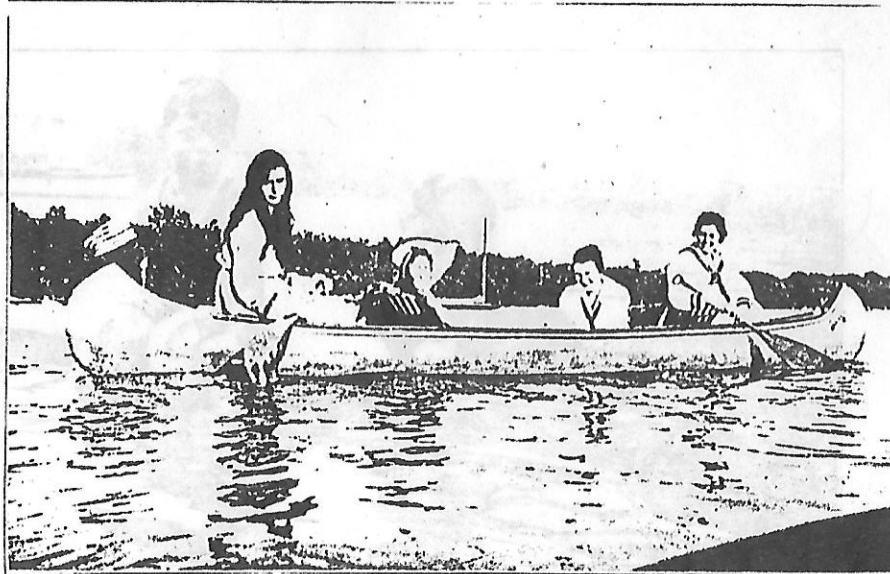


Picking Blueberries.

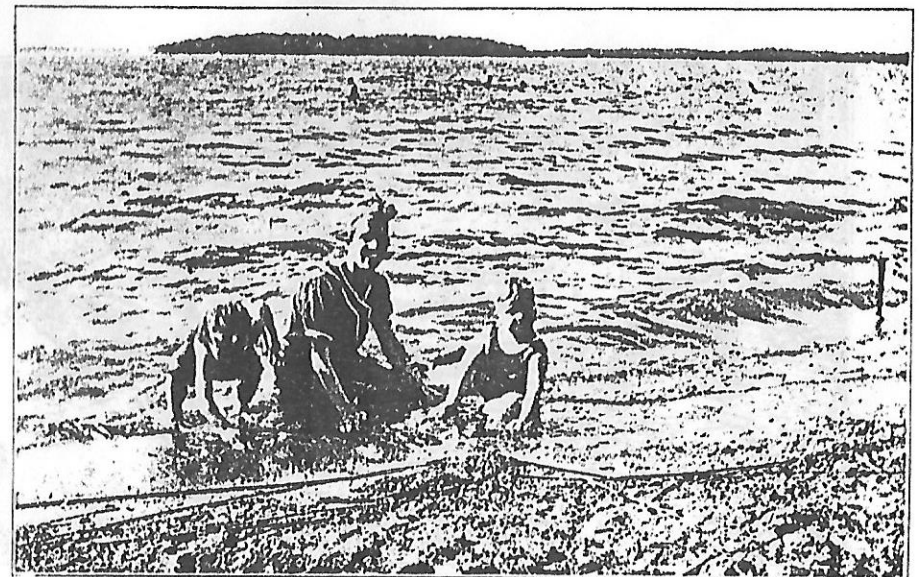
trip you can canoe up through Little Boy river to Leech Lake and on out into the Mississippi river and up to Itasca Park, the source of the mighty "Father of Waters." Or a less strenuous way is by boat with an Evinrude motor attached. You can travel by boat for hundreds of miles.

SAILING

Or, if you enjoy sailing, there is nearly always a fine breeze on the lake, and this sport can be enjoyed at its best. What is more enchanting than a sail on these silvery waters on a moonlight night? The splash of a big bass, as he breaks the surface in quest of his prey, or if you sail close to shore,



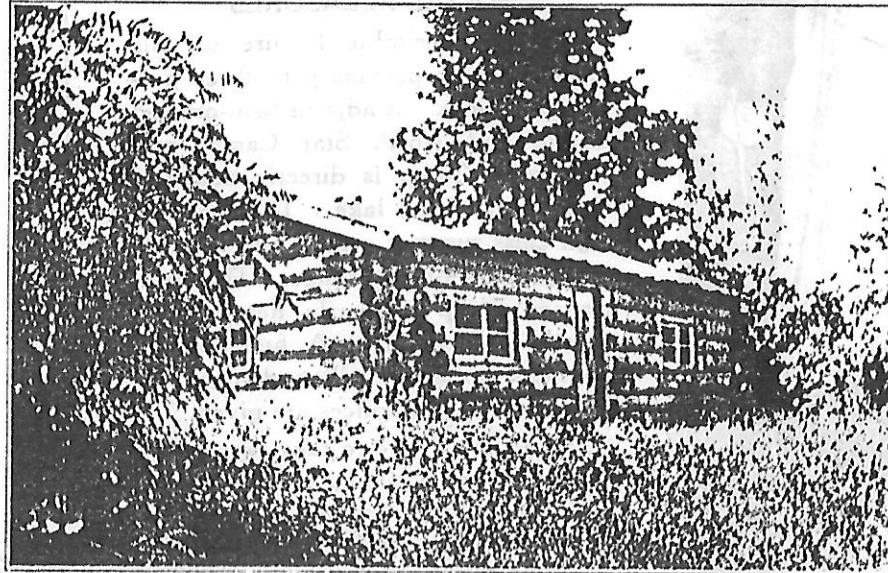
Don't they look happy? Lock up the office and come on.



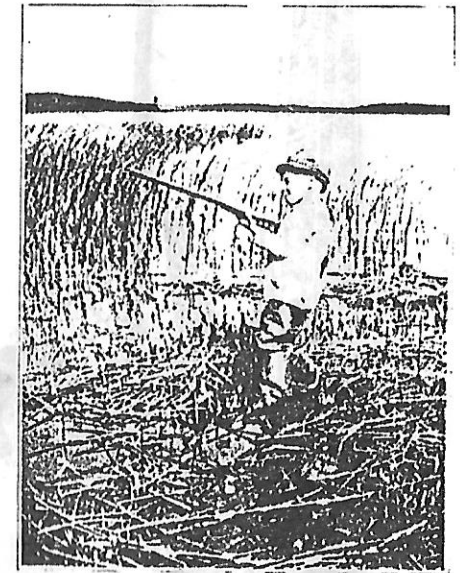
Do they enjoy it? We say they do.



Be sure to take the kodaik.



It might be Lincoln's boyhood home.



Do you suppose he could hit one?

Years ago, before the settling up of the state, hay fever patients were greatly benefitted almost anywhere from the Twin Cities north, but at the present time it is necessary to get out of the cultivated area and to get up into the more northerly part of the state. End O' the Trail is particularly favored and we can give it our unqualified recommendation.

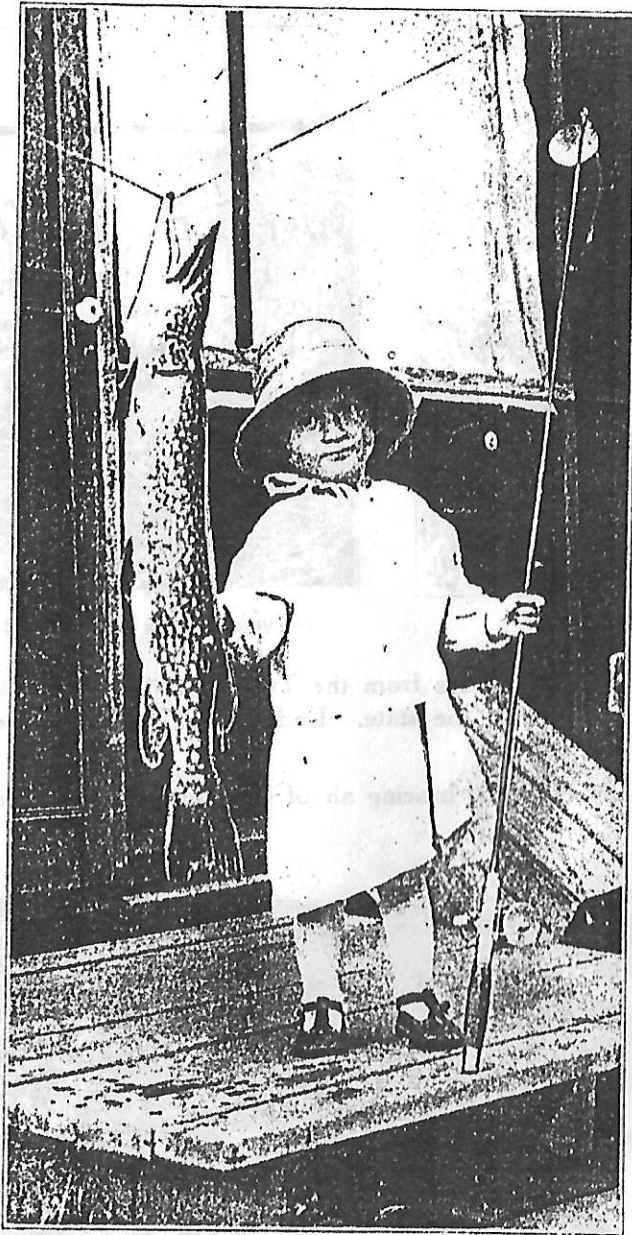
Other forms of nose and throat diseases, such as asthma, etc., are also greatly benefited by the clear bracing air of this north country and after one trip to this lake you will want to go again.



A native American.



Lunch by the wayside with "Uncle Tom."



See what my daddy caught.

In the fall the duck shooting is unexcelled. Hunters come here from all over the state to hunt ducks and geese. The small lakes are full of wild rice and are the natural breeding and feeding grounds for all species of water-fowl. There are duck passes near Woman Lake that are favorably known to the hunters from several states. And a novice can secure the limit in a few hours' shooting.

As for deer, we don't know of a better place. No long trips are necessary to get to their haunts. They are all around you. Deer are "at home"

SOCIAL PLEASURES

Another desirable feature of this property is its proximity to three permanent camps. It adjoins Seni-om-sed Lodge and North Star Camp, and Kabekona Camp is directly across a small arm of the lake. These are all high class summer resorts and cater to a high class of patronage. The Seni-om-sed camp is nearly new and is strictly up to date. A fine dancing pavilion has been built and many enjoyable informal dances are given.

Or, if you desire to take your meals at one of these camps you can do so and eliminate the bother of preparing your own. The ladies will appreciate this.

BERRIES, BERRIES, WHO WANTS BERRIES?

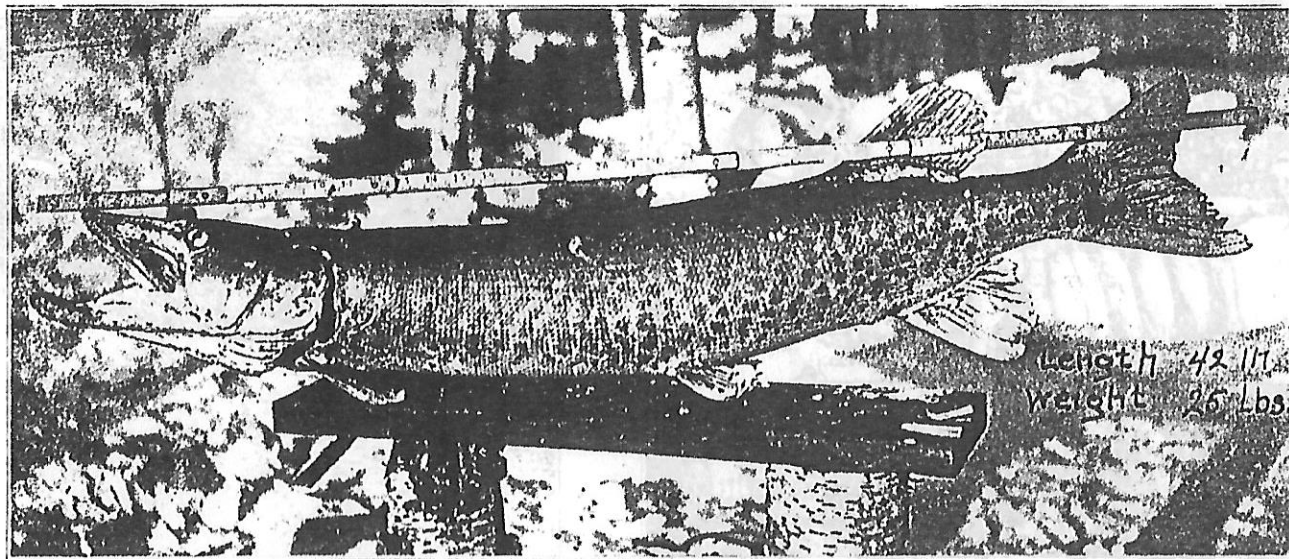
Every woman with the home instinct likes to preserve berries for winter's use. The country adjacent to Woman Lake is the natural home of many varieties of berries. Raspberries, strawberries, blue berries, cranberries, all grow wild in great profusion. To be had for the picking. You can put up your entire winter's supply if you care to. And no berries ever tasted better or sweeter than these wild berries.

HUNTING—THE BEST EVER

If you like to hunt get down the old rifle and shot gun and polish them up for you sure can use them here. The woods are alive with small game such as rabbits, squirrel and partridge.



They are here by the thousands.

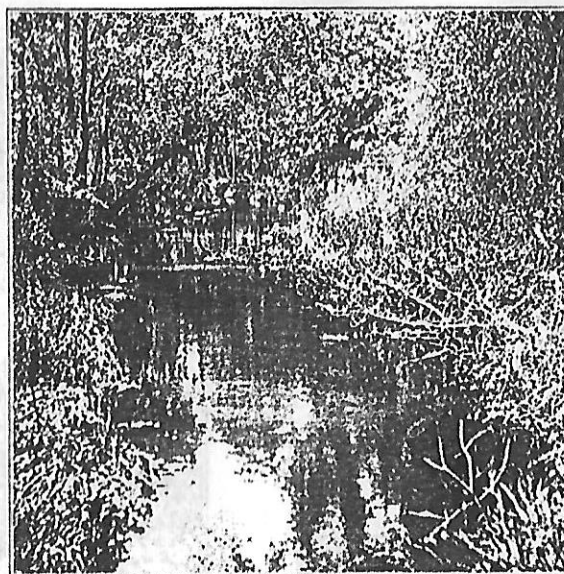


Woman Lake and the surrounding lakes are full of these big fighting muscallonge. The "big game" of the northern lakes.

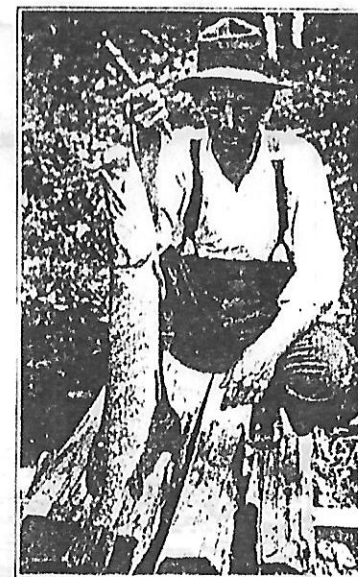
at End O' the Trail. You don't need a guide to help you get your deer but if you want one "Uncle Tom" is at your service. He knows the country thoroughly and is a prince of a good fellow. He has spent all his life in the open and the secrets of nature are as an open book to him. In the evening while gathered around a cheerful birch fire, Tom's yarns of Alaska, where he spent over twenty years as a prospector, will bring many a hearty laugh. And his "sour dough" pancakes will be a revelation. You don't know the possibilities of pan cakes 'till you eat some of "Uncle Tom's" sourdoughs.



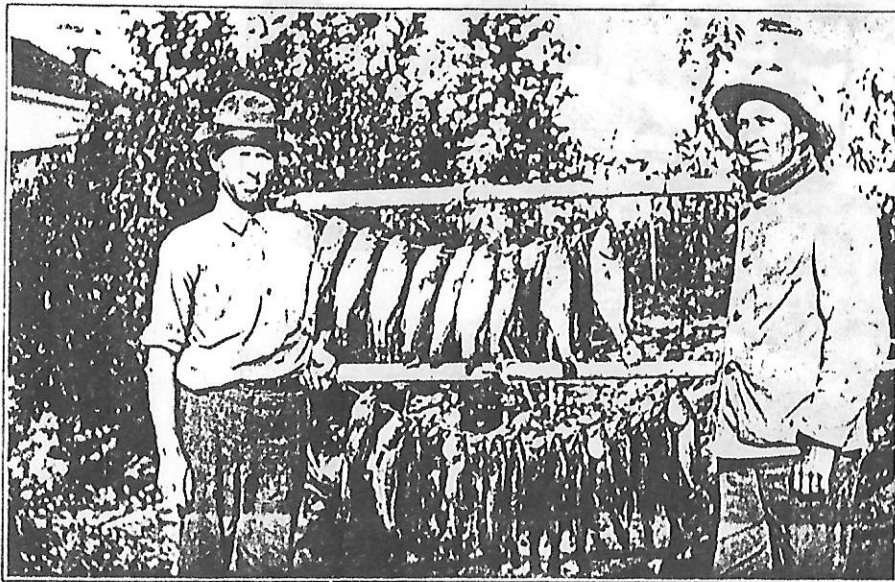
Another "muskie."



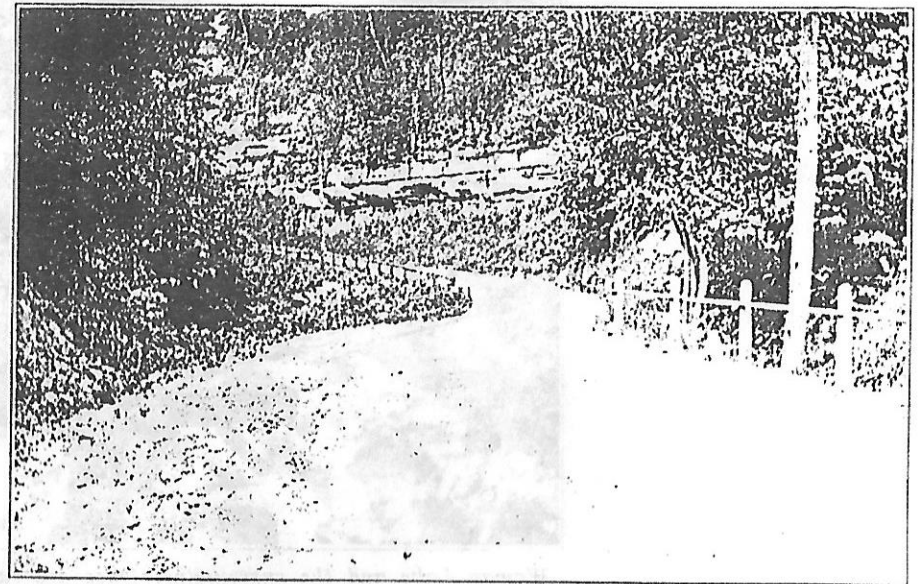
A great place for the canoe.



You can catch these every day.



A morning's catch.



On the road to End o' The Trail.

IN THE WINTER

Many people enjoy our Minnesota winters as much as they do our summers. True it is cold, but it is a dry cold, and to the young people, with rich red blood in their veins, the winter climate is very enjoyable.

There are many sports to be indulged in at End O' the Trail in winter.

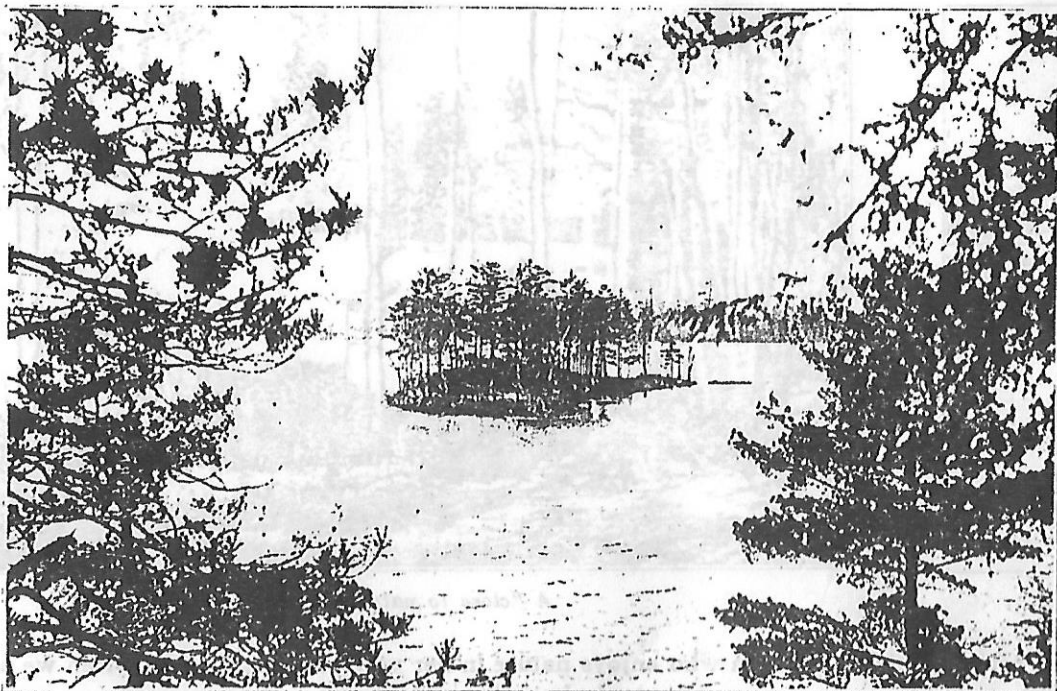
Spearing fish through the ice, from a fish house, is real sport. Many a big fellow is taken in this manner.



Seining minnows.



Oh Min! Meet Old Timer from Shady Rest. (With apologies to Sidney Smith.)

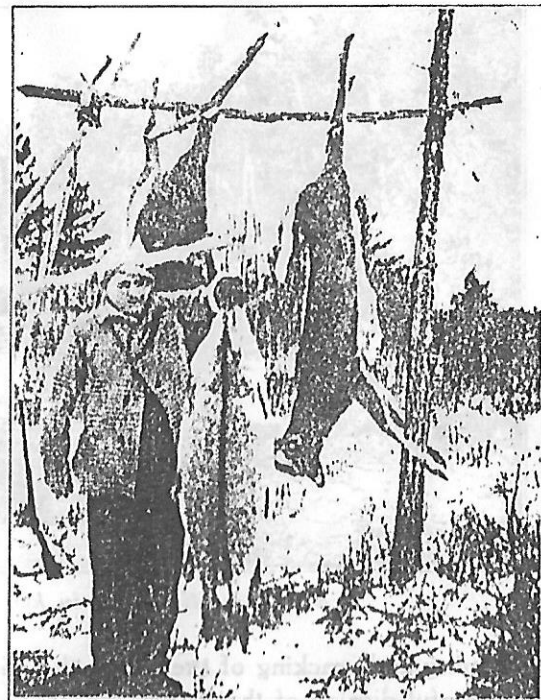


There are dozens of surrounding lakes which can be reached by boat.

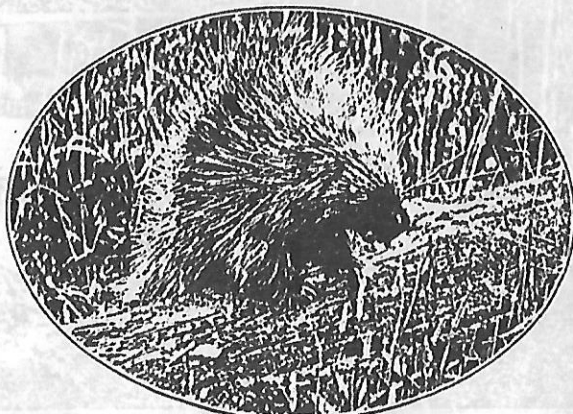
Taking white fish in a gill net, set under the ice, is also very popular and we have seen as many as one hundred and forty-two taken from one net in a one night's catch. Smoked white fish are great and it don't take long to lay in a winter's supply.

Ice-boating is another form of sport you may enjoy. When the snow is not too deep, the speed which can be attained by an ice boat is prodigious. It can pass the fastest express train.

And in the evening, after a day of sport spent in the open, how we enjoy the big fire in the cobble-stone fireplace. And on a cold night, the



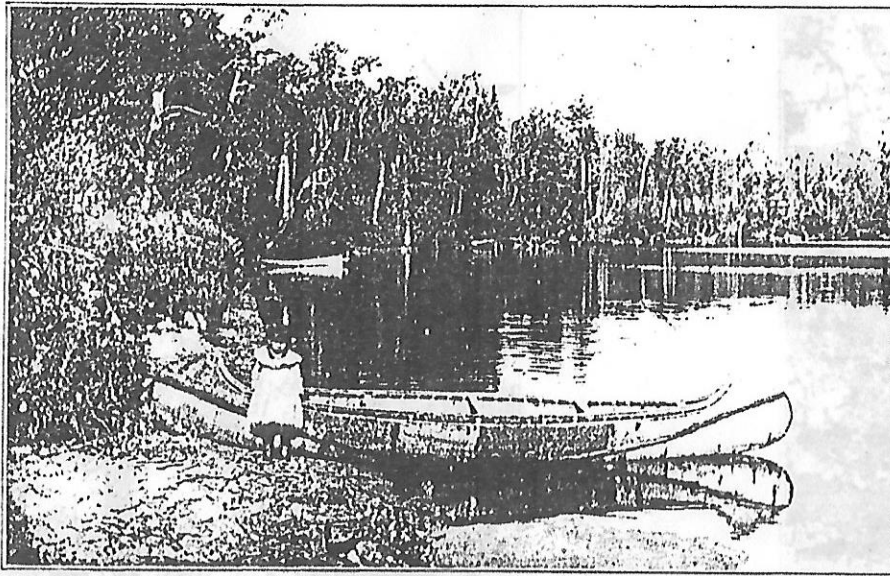
This looks "fishy" to us. We didn't take it.



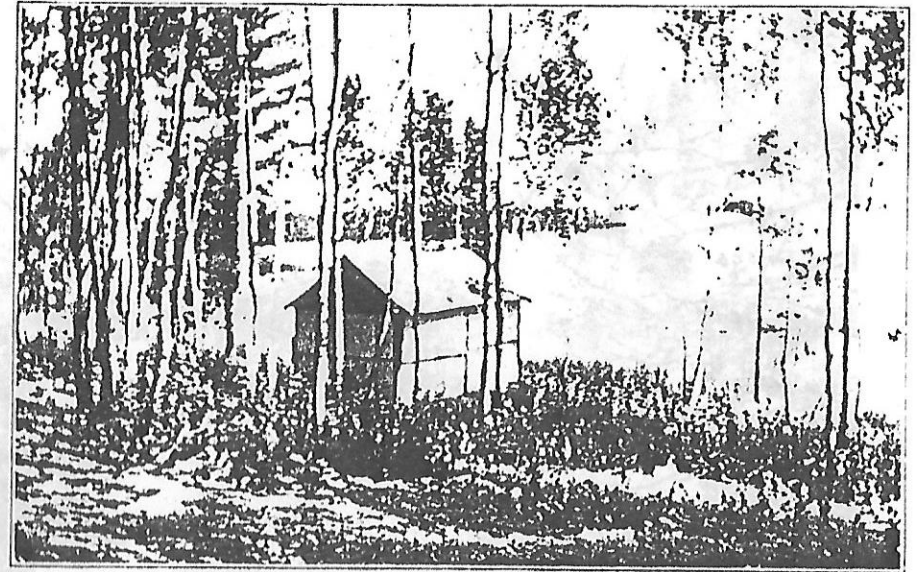
Please don't pet the animals.



A rustic lodge.



Nature is still found in her primitive state.

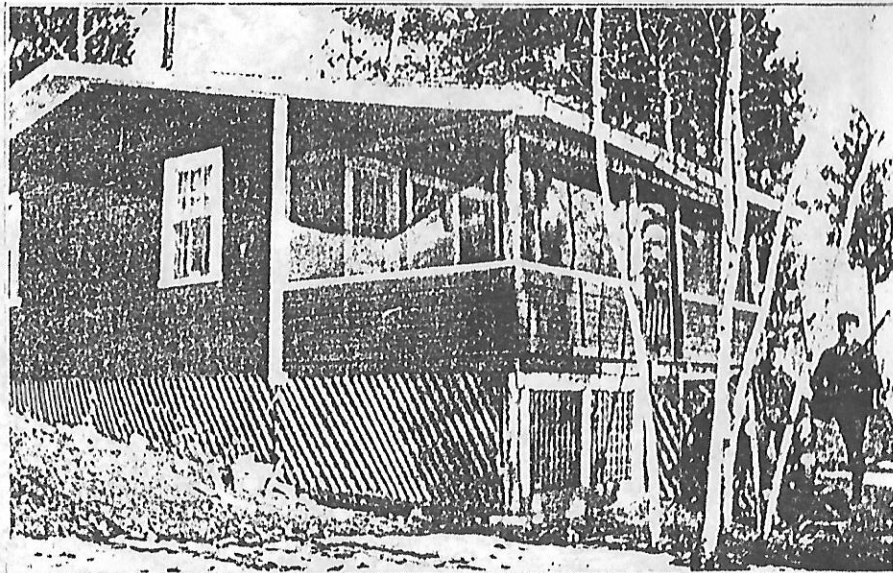


A "close to nature" house.

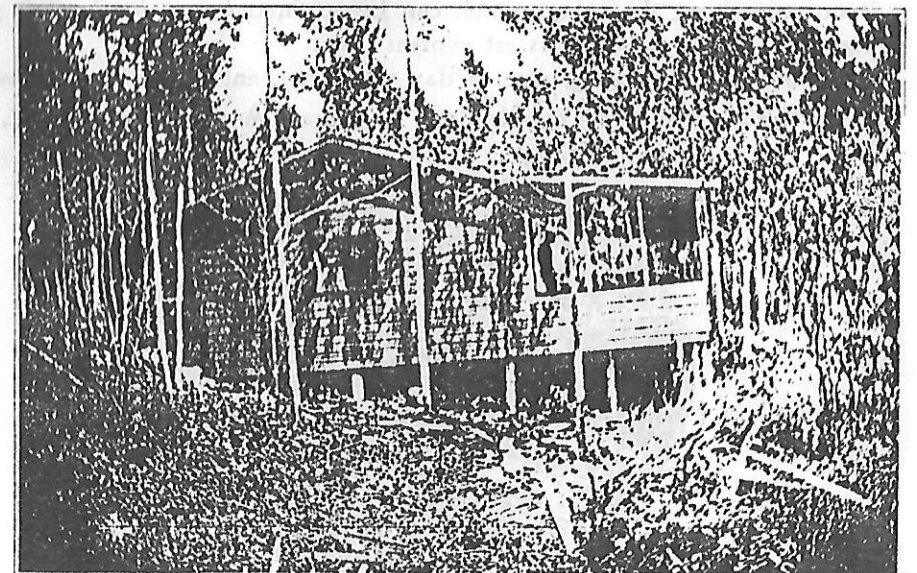
booming and cracking of the ice on the lake, as it freezes, is wonderful music to the man who enjoys nature in her various moods. And often we see a wonderful display of the Aurora Borealis or northern lights, such as is seldom seen in more southerly latitudes.

CONVENIENCES

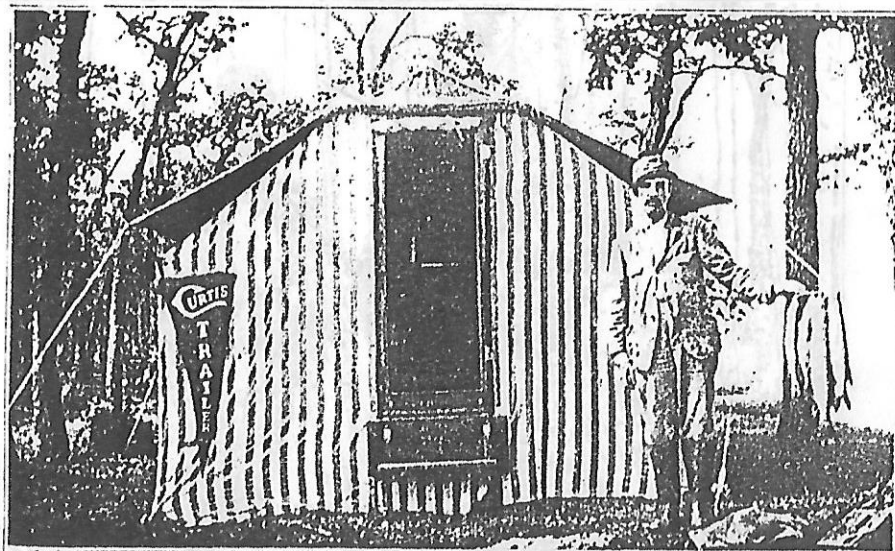
Although at End O' the Trail we are close to nature, we still have many conveniences, among which are: Telephone and bus service to Hackensack. The new Federal road to Hackensack where you can purchase supplies. This road is now being built. A sixty-six foot road with a twenty-four



A frame cabin if you prefer.



Cabins like this can be built at a small cost.



Or you can set up your "trailer" on your lot.

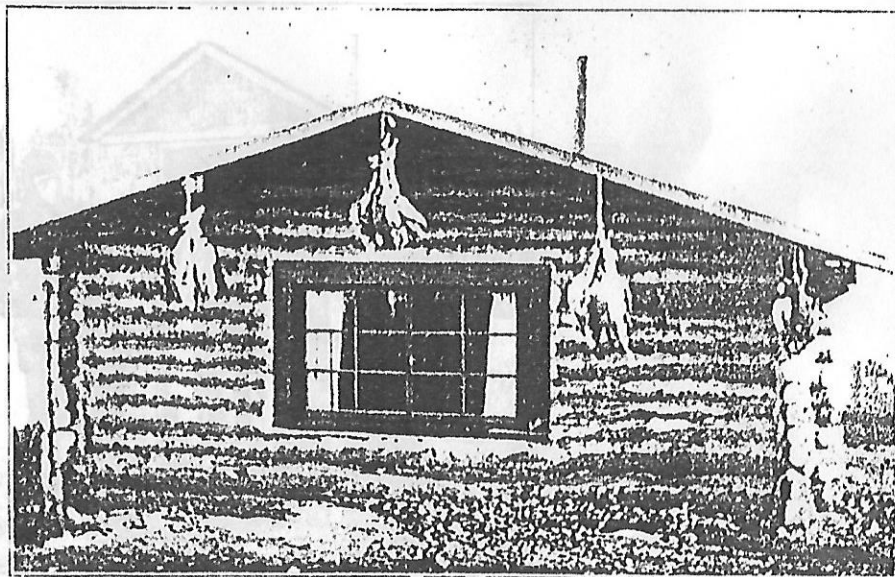


Some prefer to camp out.

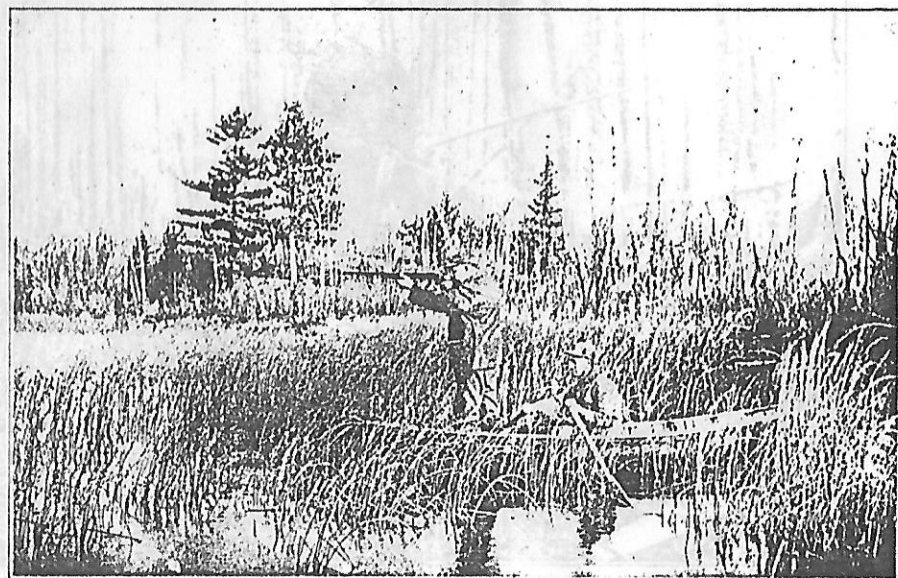
foot gravel crown. Rural free mail delivery. Boats for hire, if you don't have your own. Bait for fishing at a minimum cost. Ice to keep your fish and supplies fresh. Meals at one of the lodges if you desire. Dancing at the pavilion. Plenty of fresh eggs and vegetables from nearby settlers. These and many other conveniences help make your visit most enjoyable.

SIDE TRIPS OVER WONDERFUL ROADS

While spending your vacation here you will enjoy taking numerous side trips. The roads in Cass county will be a pleasant surprise to you. This



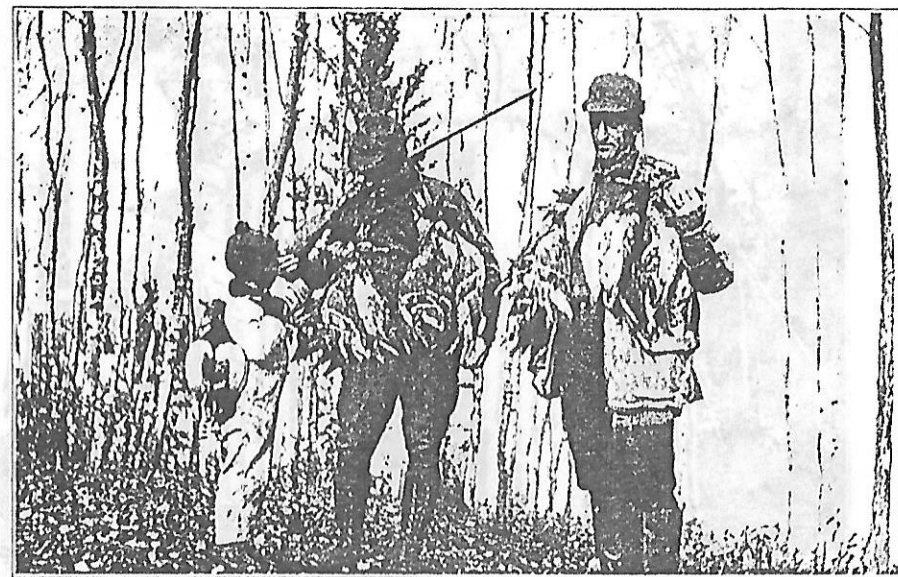
A substantial log cabin.



Hunters come here from several states to hunt ducks and geese.



All ready for the big hunt.



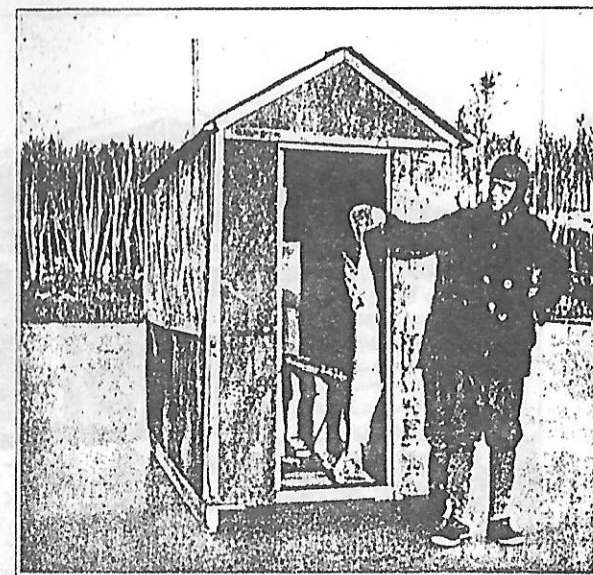
You can secure the limit every day.

county won the \$1,200 Good Roads Trophy given by the Automobile Club of Minneapolis to the county showing the greatest amount of improvement upon its roads between the trip of the pathfinder for its annual tour and the tour proper.

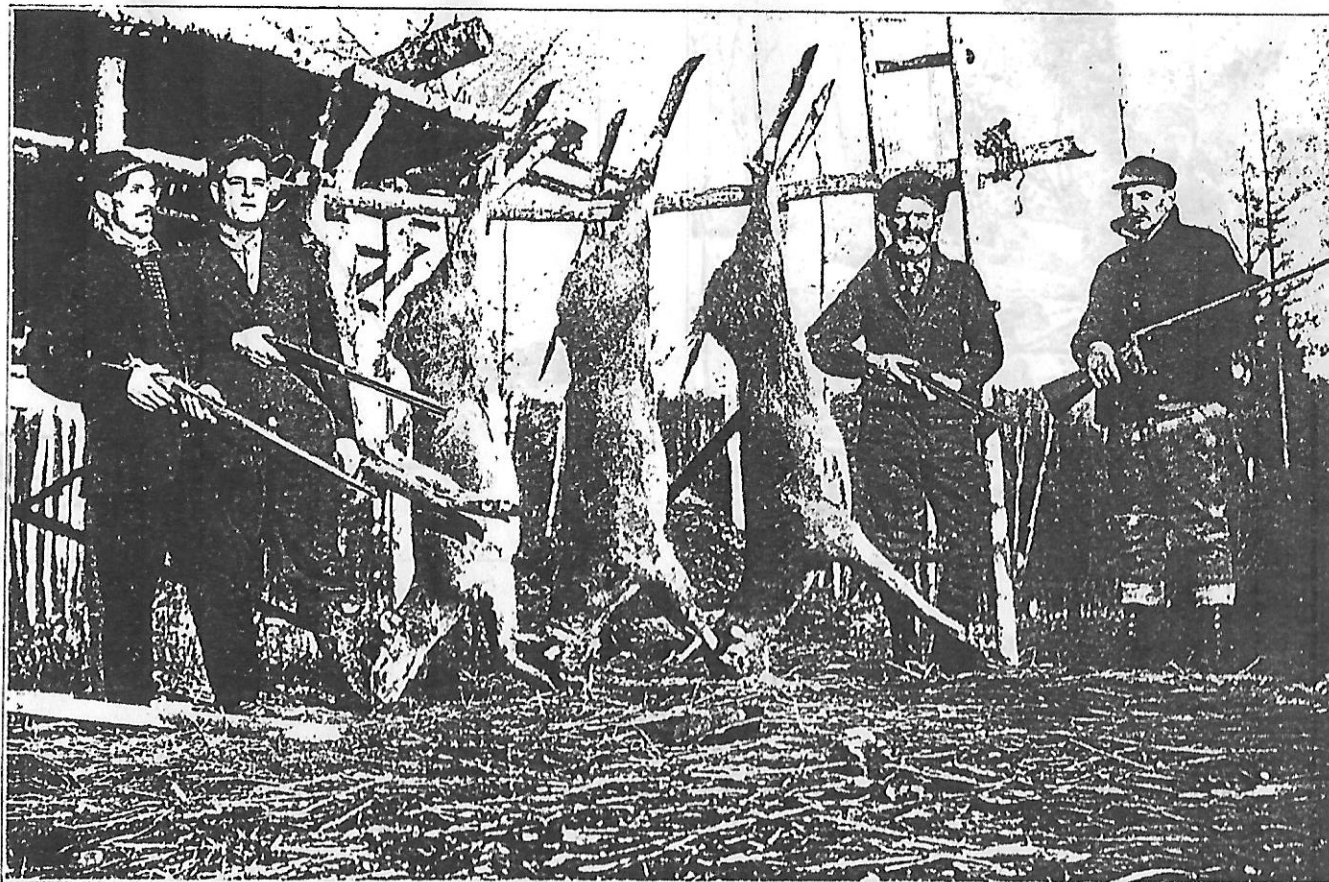
There are now more than five hundred miles of graded state roads in the county, over two hundred miles having been completed within the past two years and a large amount of new work is projected for this year. The country is rolling and the scenery wonderful. The roads are lined with gorgeous wild flowers and the vegetation everywhere is luxuriant. Constant exclamations of delight will be heard, as at each turn of the road new



Bringing home the venison.



Spearing fish in winter.



Deer are "At Home" at End o' The Trail.

panoramas unfold themselves to view. After spending one season here you will be one of our boosters. We have yet to hear the first knock for this section.

PICTURES

The pictures shown in this booklet are only samples of those you may take yourself, during a trip to this beautiful tract. Our views were mostly taken as "snap shots" with small cameras and were taken by amateurs. Most of the shore line pictures were taken in the winter, as the vegetation is so dense in summer, it is difficult to get a picture that gives you an adequate idea of the lay of the land.

By all means take your camera with you when you take your vacation trip to this property as the pictures you take will bring to mind many happy days spent at this wonderfully beautiful spot, for End O' the Trail may truthfully be called "Nature's supreme effort."

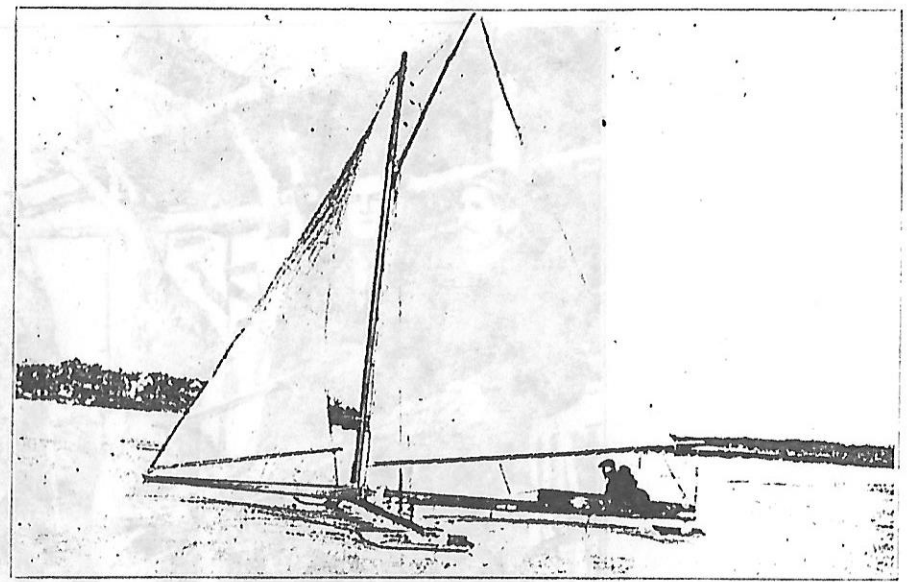
CABINS

If you desire a permanent cabin, and after your first trip we know you will, we are in a position to build it for you. We can build log cabins from \$150.00 up. We have men in our employ constantly, who are thoroughly familiar with the work. There is nothing finer than owning your own cabin where you can store your supplies and your boat or canoe when you leave. It is cumbersome when you go out for a trip to have to pack tents, dishes and camp supplies in your auto. You will never know the real delights of a trip 'till you have your own little cabin to go to. Let us figure with you on your cabin.

If you feel that the cost of a lot with a cabin would be excessive, two or three parties can arrange to buy together. By making your visits at



Getting out logs for cabins in winter.

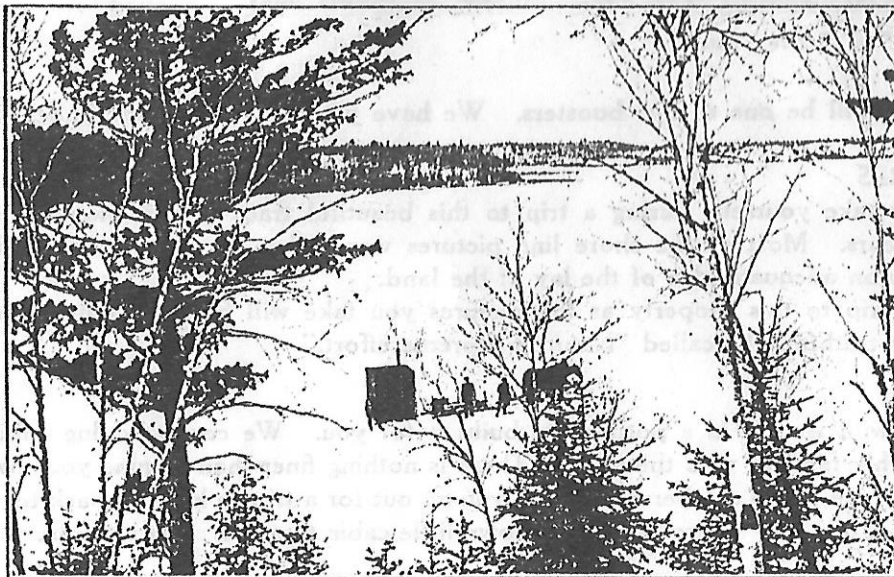


An ice boat can pass the fastest express train.

different times this will work out very satisfactorily and will reduce the expense to a minimum. And when not in use a cabin can always be rented and at a good price. It can easily be made to pay for itself in a short time.

INVESTMENT

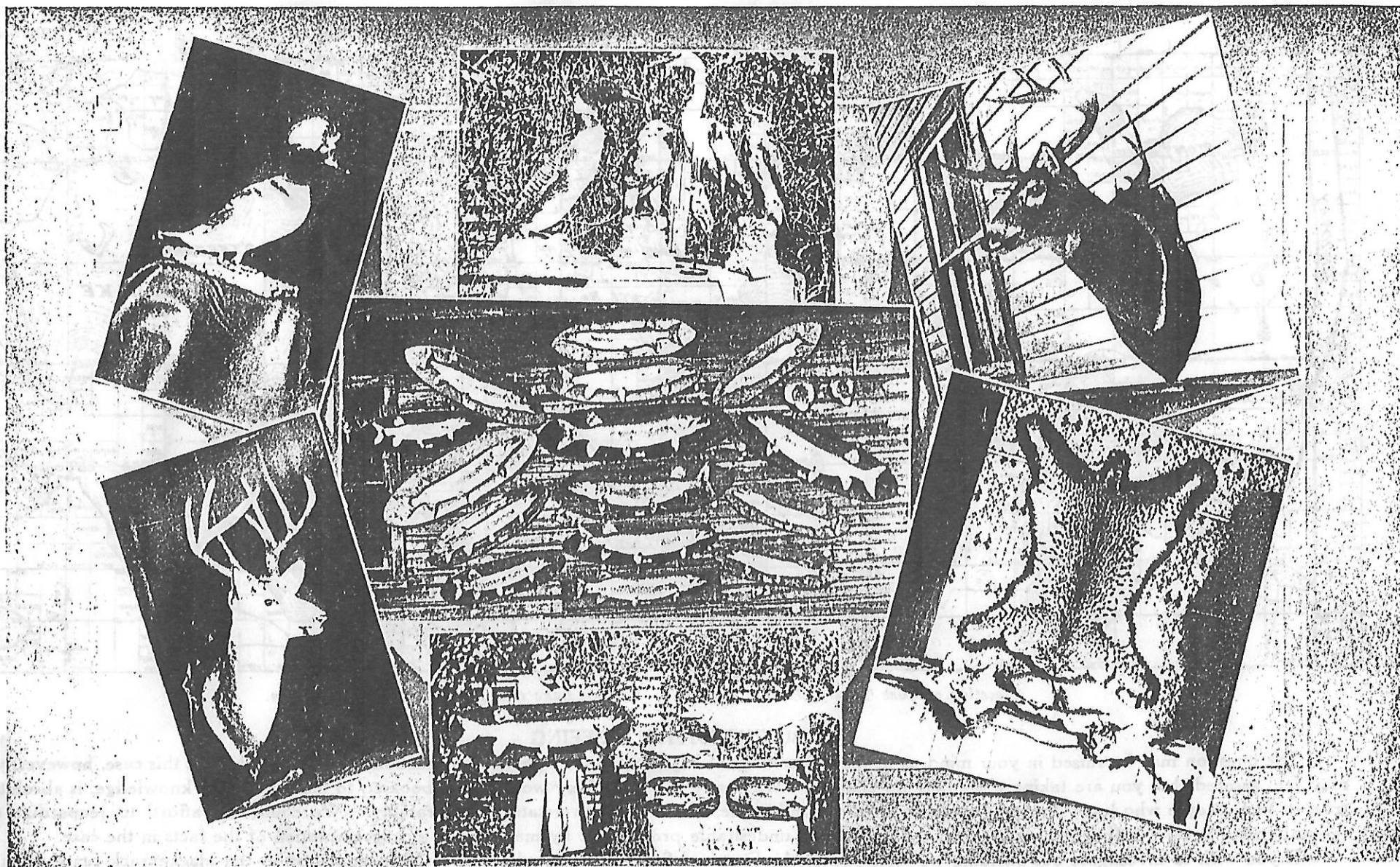
While we are desirous of seeing the purchasers of our property actually build cottages or cabins and get real enjoyment from the use of them, do not overlook the fact, that considered strictly as an investment this property offers a wonderful opportunity. True, there are thousands of lakes in Minnesota, but on the other hand, there are very few that offer the advantages of Woman Lake. The accessibility, the wonderful shore, the fishing



Hauling the fish house onto the ice.



After the day's hunt.



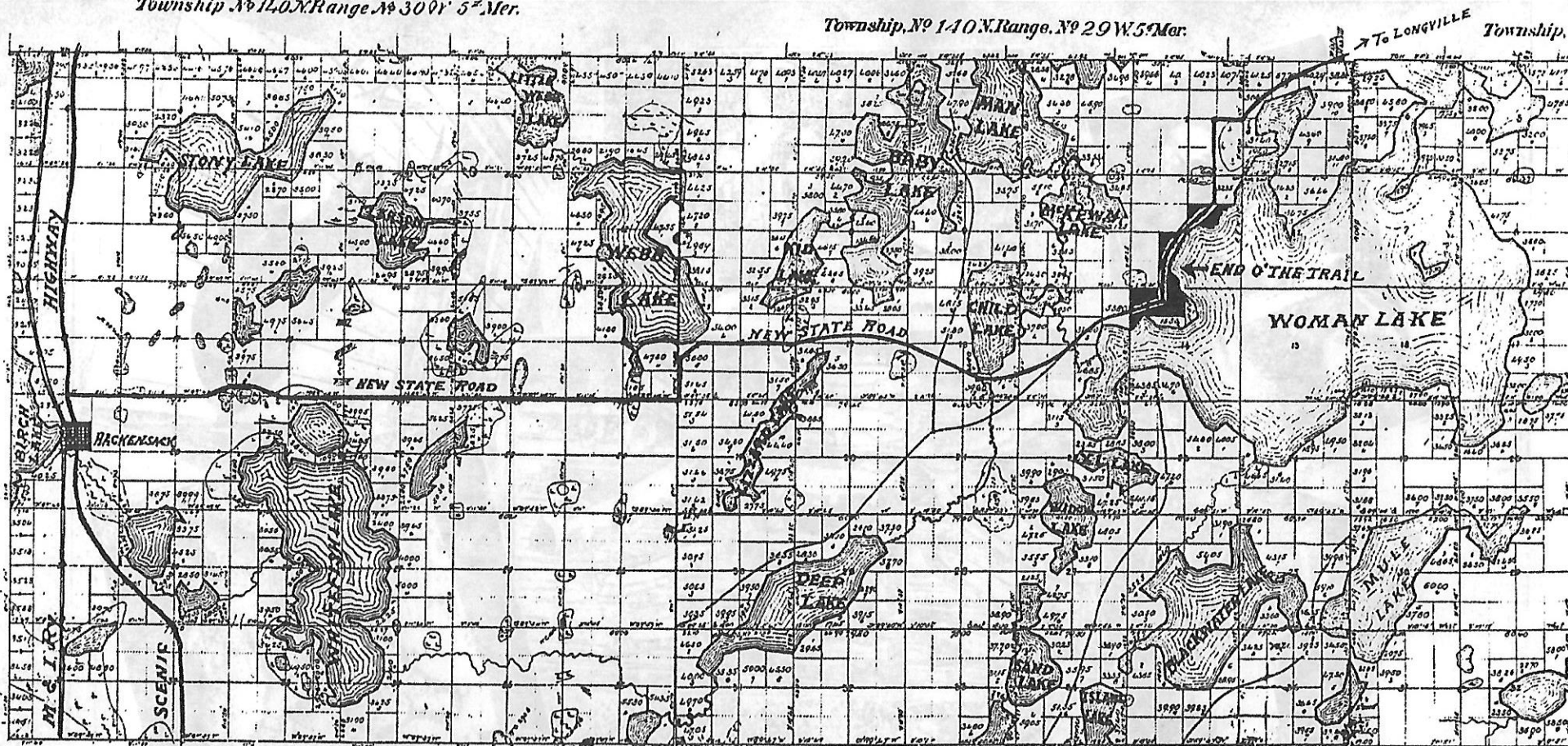
Just trophies.

and hunting unexcelled, and the various other good features that we have mentioned, combine to make End O' the Trail unusually attractive, and we predict that lots will go to high figures. Values should double and treble in a very few years.

Do you realize that Minnesota is fast becoming the summer playground of the nation? Last season more people visited us than ever before in the history of the state. The hotels everywhere were filled and summer resorts turned away thousands that they could not care for. Our magnificent highways are bringing tourists from every state in the union and with an appropriation of millions of dollars to be spent this year, in further improvements on roads, we predict an influx of tourists that will surprise even the most optimistic. And these tourists like it here and will come again and bring their friends. And most of them want a permanent cottage or cabin.

So even if you find it impossible to use your lot personally, it is well worthy of your consideration as an investment.

Township, N^o 140 N. Range, N^o 29 W. 5th Mer.



BUYING WITHOUT SEEING

If you wish to investigate our standing we refer you to the First and Security National Bank of Minneapolis or to the Hackensack State Bank of Hackensack.

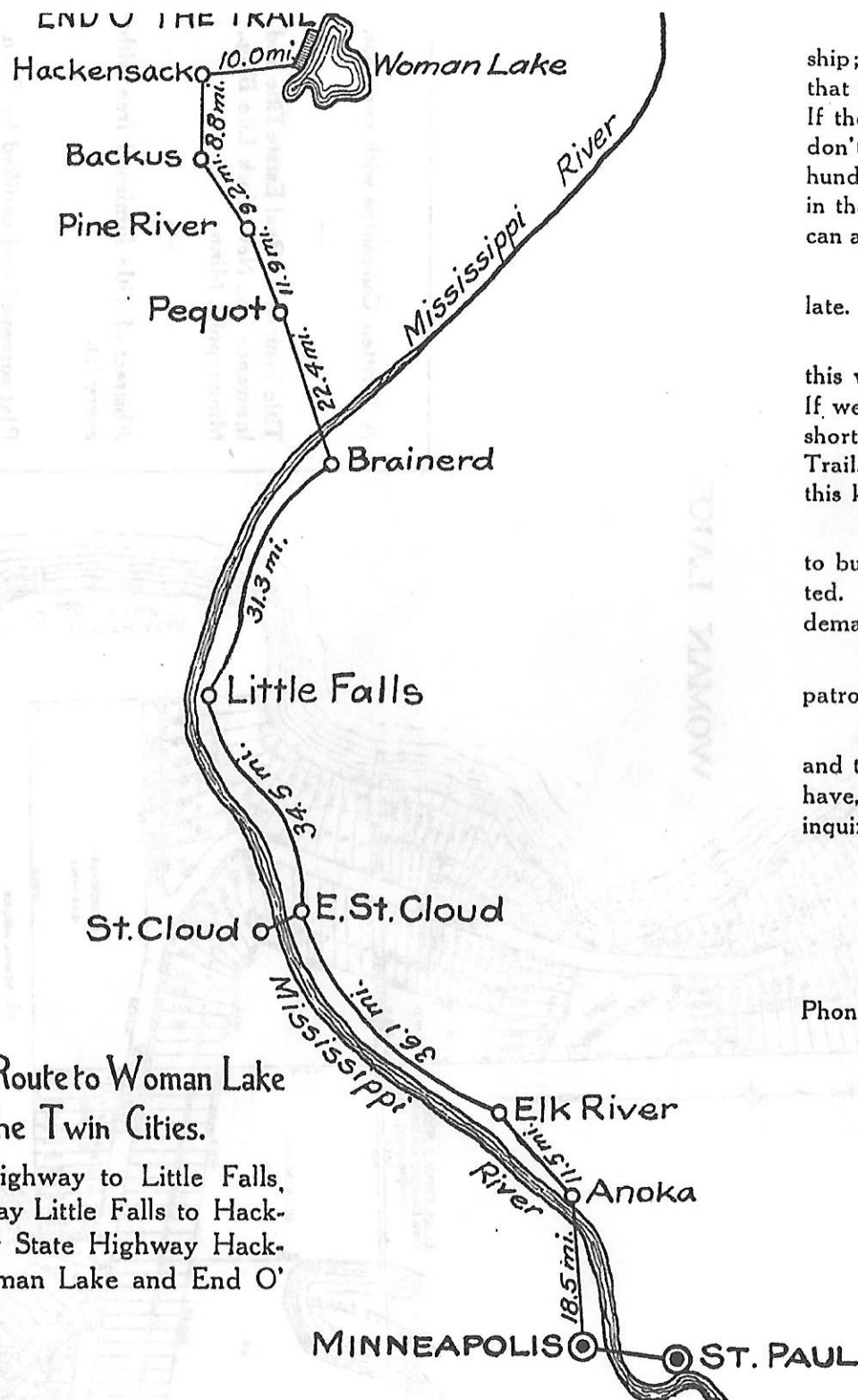
However, if after buying, you should decide, upon inspection of the property, that you would rather have some other unsold lot in the tract, of equal or of higher price, you may have the privilege of exchanging at any time you desire by paying the difference, if any, in price.

Or, if you find upon inspection, that we have in any way misrepresented the property, come in to our office and we will refund your money with interest. If we didn't know that the property was as good as or better than we have pictured it we couldn't afford to make you a proposition of this kind.

But we know that in End O' the Trail we have a gilt-edged proposition and we feel that we can sell it to our friends and still retain their friend-

Automobile Route to Woman Lake from the Twin Cities.

Jefferson Highway to Little Falls,
Scenic Highway Little Falls to Hack-
ensack. New State Highway Hack-
ensack to Woman Lake and End O'
The Trail.



ship; in fact, make better friends of them than ever. We know that every buyer of one of our lots is going to be a booster for us. If there is one single drawback or objection to this property we don't know what it is. We feel that we have as nearly a one hundred per cent perfect proposition as could be found anywhere in the United States. And only by dealing fairly with the public can a firm expect to establish a reputation such as we enjoy.

So we again urge you to secure your lot now, before it is too late.

We have tried in this booklet to give a fair presentation of this wonderful addition on one of the finest lakes out of doors. If we have failed it is because it is impossible to portray, in so short a space, all of the pleasures in store for you at End O'the Trail. It is hard to do justice in cold type, to a proposition of this kind.

During the past few years, hundreds have sought in vain to buy lots on this lake, as never before has anything been plotted. We are placing this property on the market to fill this demand.

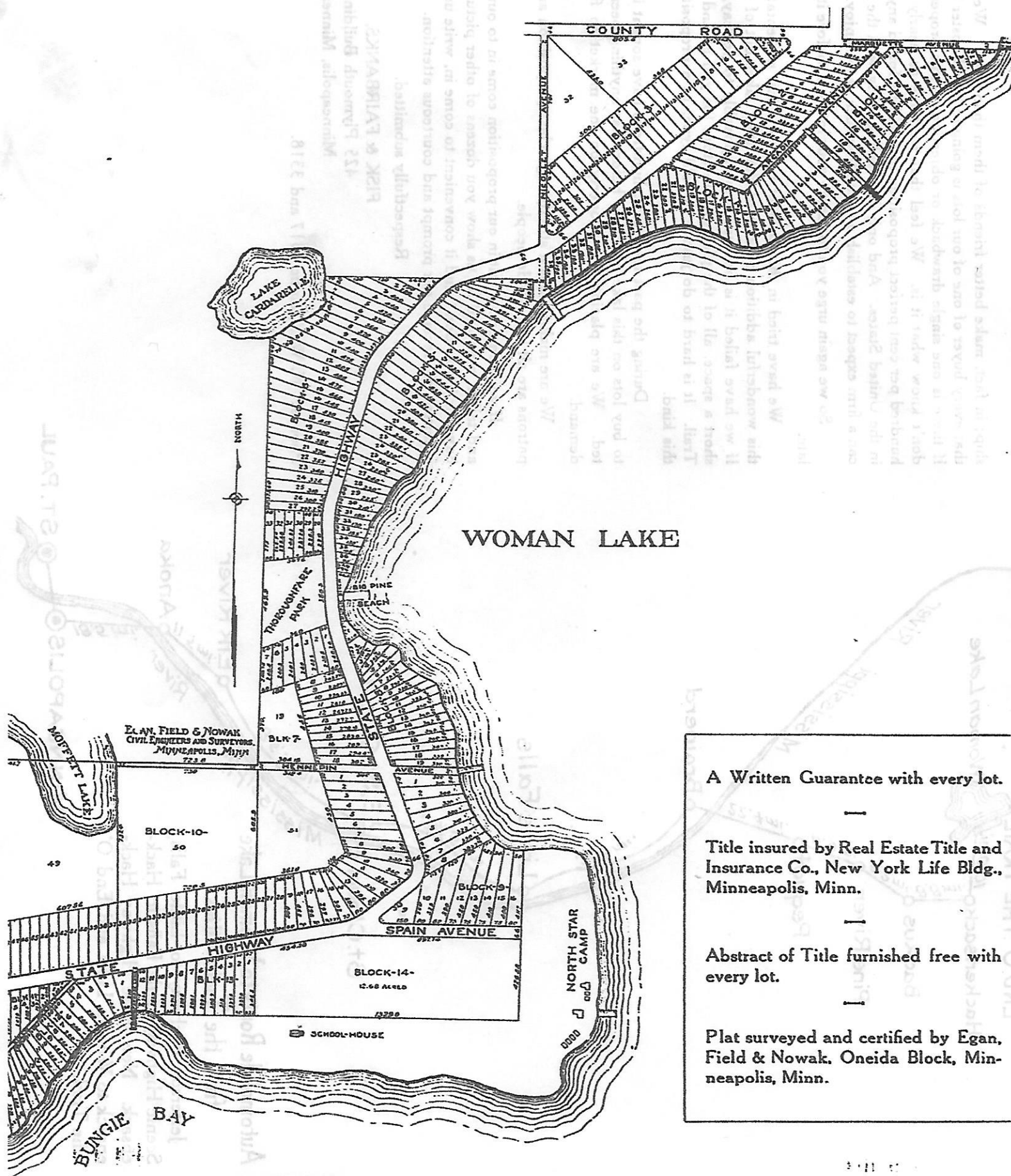
We are making this a strictly high-class proposition and our patrons are all high-grade people.

If you can find merit in our proposition come in to our office and talk it over and let us show you dozens of other pictures we have, or if you don't find it convenient to come in, write us. All inquiries will receive our prompt and courteous attention.

Respectfully submitted,

FIK & FAIRBANKS,
425 Plymouth Building,
Minneapolis, Minnesota.

Phones: N. W. Atlantic 3317 and 3318.



A Written Guarantee with every lot.

Title insured by Real Estate Title and Insurance Co., New York Life Bldg., Minneapolis, Minn.

Abstract of Title furnished free with every lot.

Plat surveyed and certified by Egan, Field & Nowak, Oneida Block, Minneapolis, Minn.